

RERA Registration Number  
**RAJ/P/2022/1875**  
www.rera.rajasthan.gov.in



Chordia's  
*Wonder*  
**HOMES**

**2 & 3 BHK APARTMENTS**

Chordia City, Kamla Nehru Nagar,  
Ajmer Road, Jaipur

*A perfect blend of luxury & serenity*





**CHORDIA'S**  
EXPECT MORE

## *About Us*

From last 10 years Chordia's group of builders is providing itself by making true sense of its punch line "We make your dream". Chordia's group of builders is the one who has done a fabulous work by changing the lifestyle of the Jaipurites and fulfilled the dream of thousands of people. The Journey that was started from Prime Ville is now reaching to new heights. The Marbella is perfectly dominated to provide a dreamful life. Utmost luxury, superb construction quality and state-of-the-art technique makes the Chordia's group of builders a real leader of the industry.

The milestone achieved by Chordia's group of builders is a result of hard work, positive attitude, dedication and prudent thinking of Chairman Mr. Vinay Chordia. Following the mantra "Dream with work can develop the World" Chordia's group of builders is progressing towards changing the parameters of real estate industry. The vision of Chordia's group of builders is "to build buildings not only with cement and steel but with a human touch, to provide better spaces and better living to all its customers spanning residential, commercial, integrated townships, malls, multiplexes and hospitality sectors." Commitment, integrity, quality and innovation are the main core values of Chordia's group of builders that inspires the group to perform some steps ahead than the competitor.



Chordia's

# Wonder HOMES

*Dream Homes at unexpected price*

- YOUR DREAM HOMES IN THE HEART OF MODERN JAIPUR
- A PERFECT LOCATION TO LIVE LIFE IN DREAMS
- A PLACE WHICH IS CONNECTED WITH THE NATURE









Chordia's

# Wonder HOMES

Opening door to

*Lavishly Aesthetic Life*

at Wonder Homes

## OVERVIEW

- A Township of 120 Flats (2&3 BHK)
- Elite Club House
- Indoor Games Facility
- 2 Separate Towers with Grand Entrance
- Separate Party Terrace for Each Tower
- Theme Garden on the Terrace



*Unmatched Way* of Life





Chordia's  
*Wonder*  
HOMES





Chordia's  
*Wonder*  
HOMES







## LOCATION ADVANTAGE

YOUR DREAM HOMES IN THE HEART OF MODERN JAIPUR

A PERFECT LOCATION TO LIVE LIFE IN DREAMS

A PLACE WHICH IS CONNECTED WITH THE NATURE

### 📍 LANDMARKS

Main Market	300mtrs
Heerapura Flyover	1.25km
Gandhipath	2km
Vaishali Nagar	4.5km
Super Market	4.5km
Mansarovar Metro Station	5.5km
Railway Station	9.6km
Sindhi Camp	11km
Ajmeri Gate	12.5km

### 🎓 COLLEGES

Rawat Girl	2.5km
Chanakya	2km
RIET	3km
JK LU	10km

### 📖 SCHOOLS

Chaitanya Techno School	200mtrs
Poddar	250mtrs
Sophiya	3km
DPS & STEP by STEP	6 km
St. Xaviers	11km

### 🏥 HOSPITALS

Rawal	3km
Shalby	3.5km
Ashoka	4km
Asopa	4km
Global Heart	5.5km
Metro Mas	7.5km

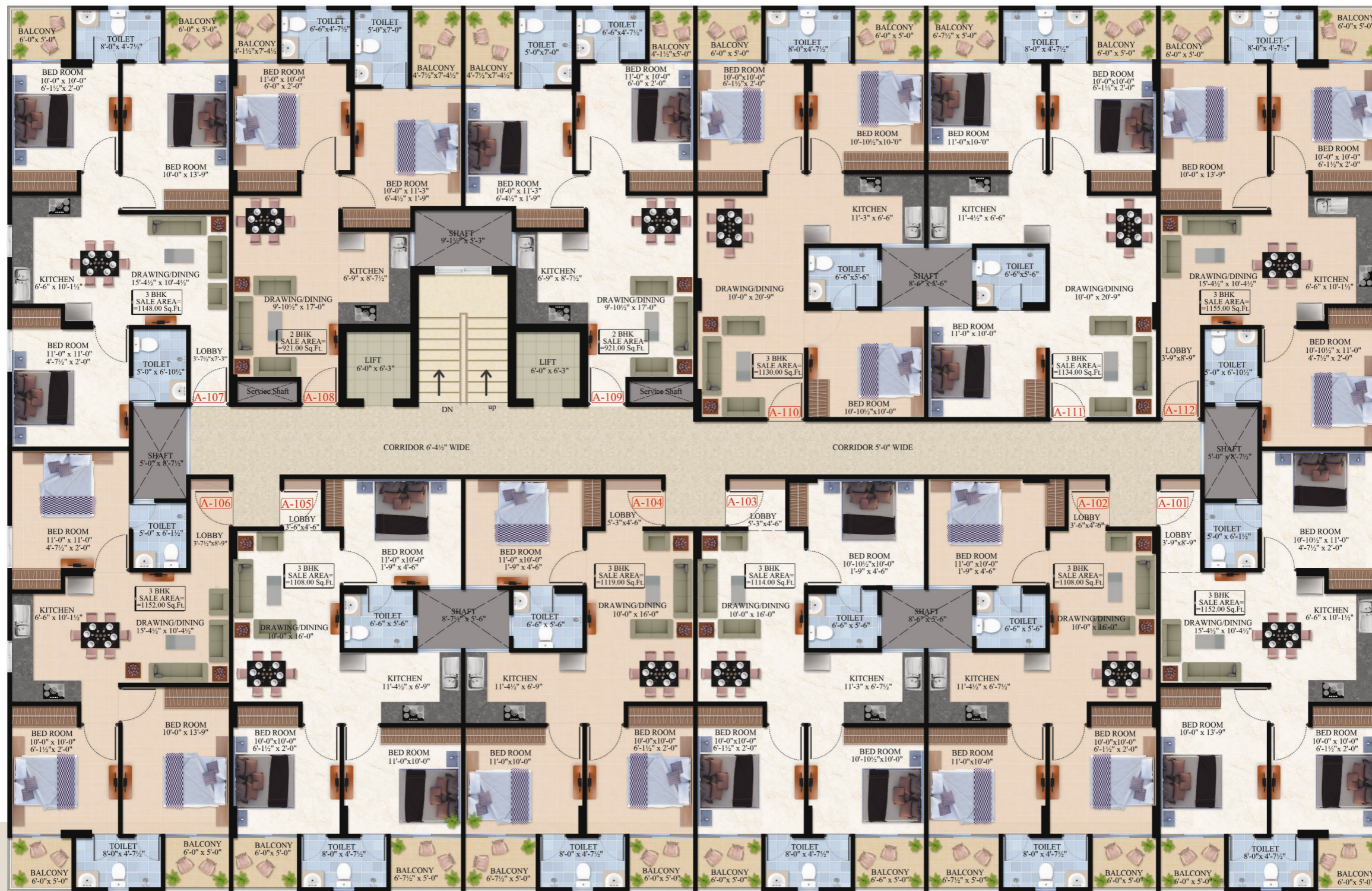
### 🍴 RESTAURANTS/FUN ZONES

Highway king	2.5km
Apple Inn	3km
INOX	4.5km
Mc Donolds	4.5km
RJ 14	4.5km

### 🏠 BANKS

SBI	800mtrs
ICICI	3km
AXIS	3km



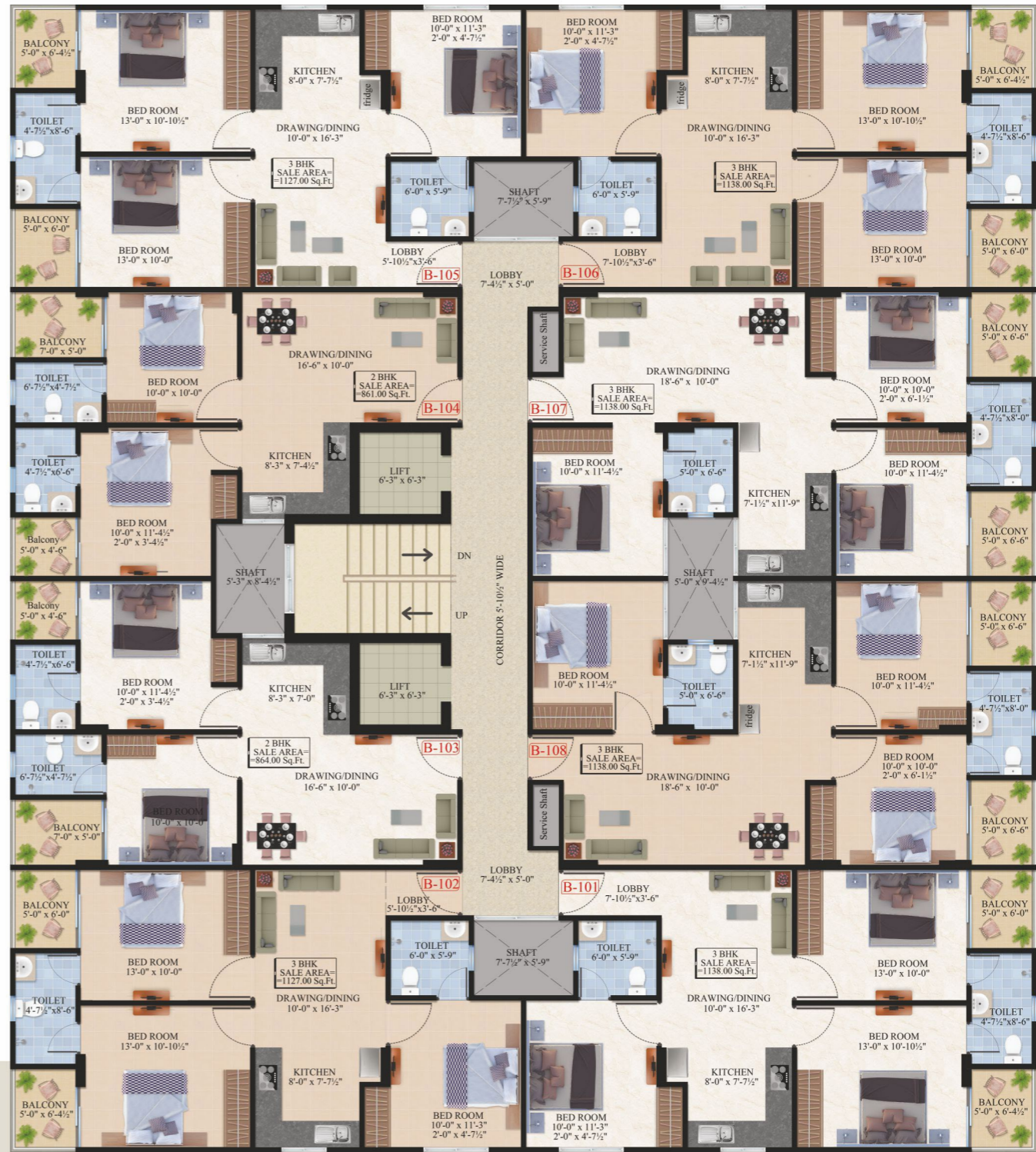


**TYPICAL FLOOR PLAN 1ST TO 6TH (BLOCK A)**



TYPICAL FLOOR PLAN 1ST TO 6TH (BLOCK A)		
S.No.	Flat No.	Saleable Area
1.	101	1152.00
2.	102	1108.00
3.	103	1114.00
4.	104	1119.00
5.	105	1108.00
6.	106	1152.00
7.	107	1148.00
8.	108	921.00
9.	109	921.00
10.	110	1130.00
11.	111	1134.00
12.	112	1155.00

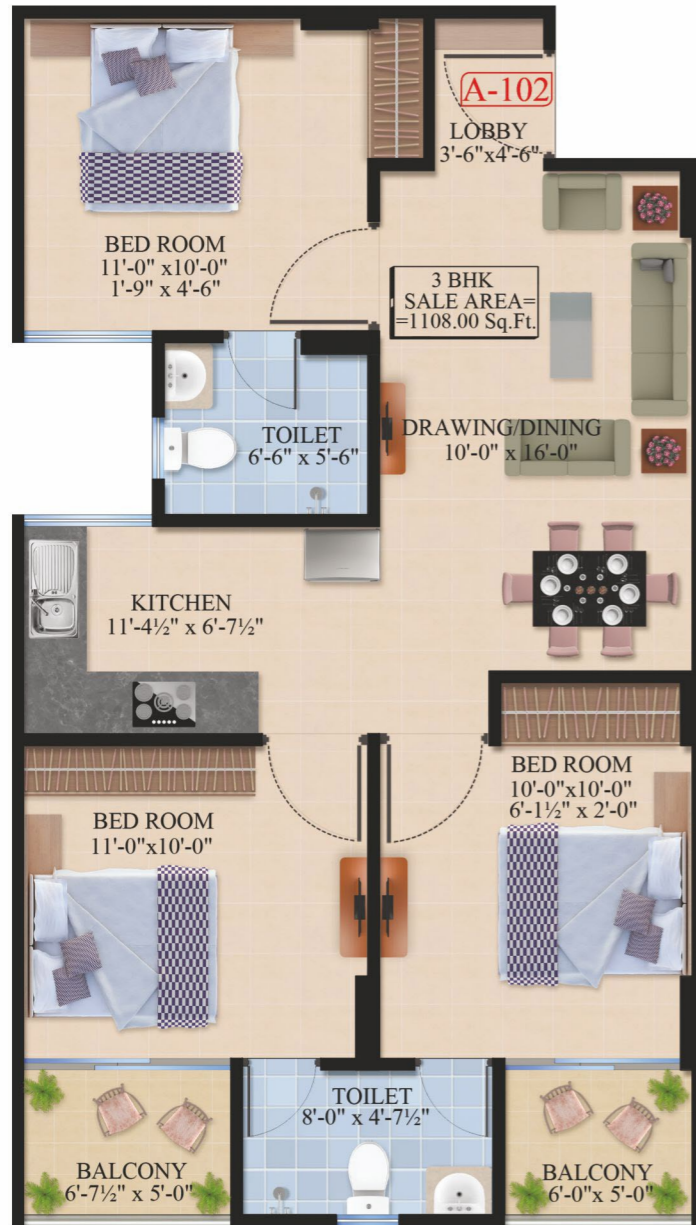
TYPICAL FLOOR PLAN 1ST TO 6TH (BLOCK B)		
S.No.	Flat No.	Saleable Area
1.	101	1138.00
2.	102	1127.00
3.	103	864.00
4.	104	861.00
5.	105	1127.00
6.	106	1138.00
7.	107	1138.00
8.	108	1138.00



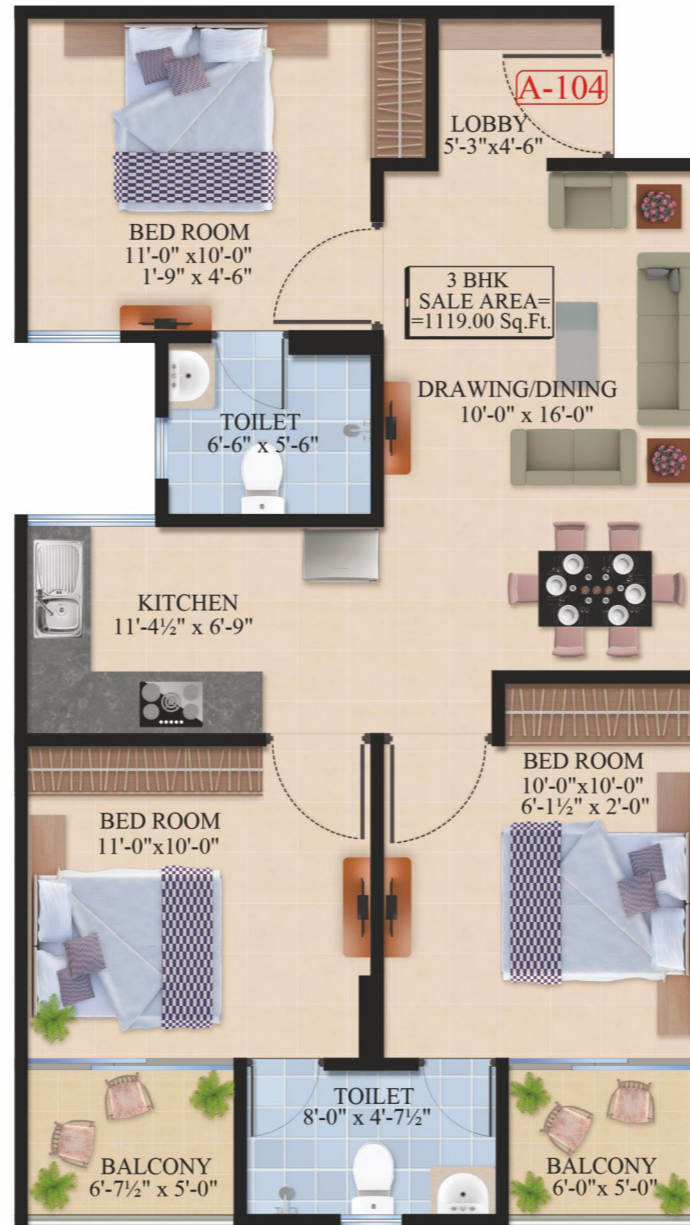
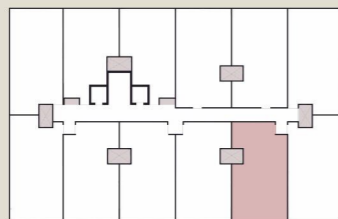
**TYPICAL FLOOR PLAN 1ST TO 6TH (BLOCK B)**



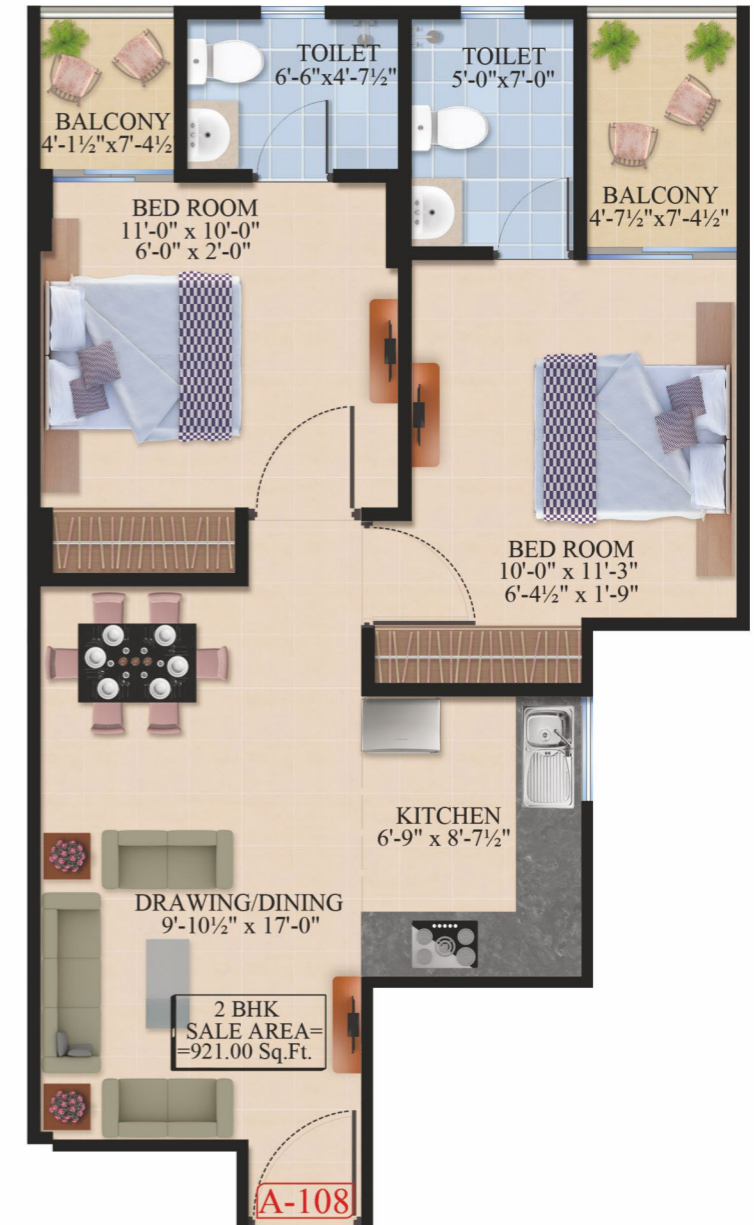
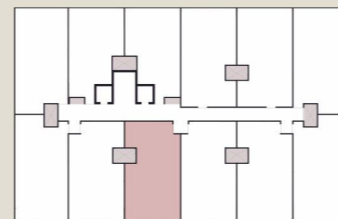
# FLATS FLOOR PLANS



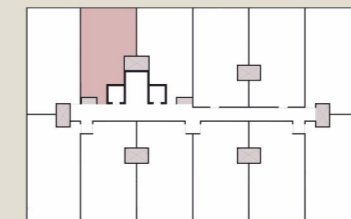
Flat No. 102 Floor Plan, 1108 Sq. Ft.  
(BLOCK A)



Flat No. 104 Floor Plan, 1119 Sq. Ft.  
(BLOCK A)

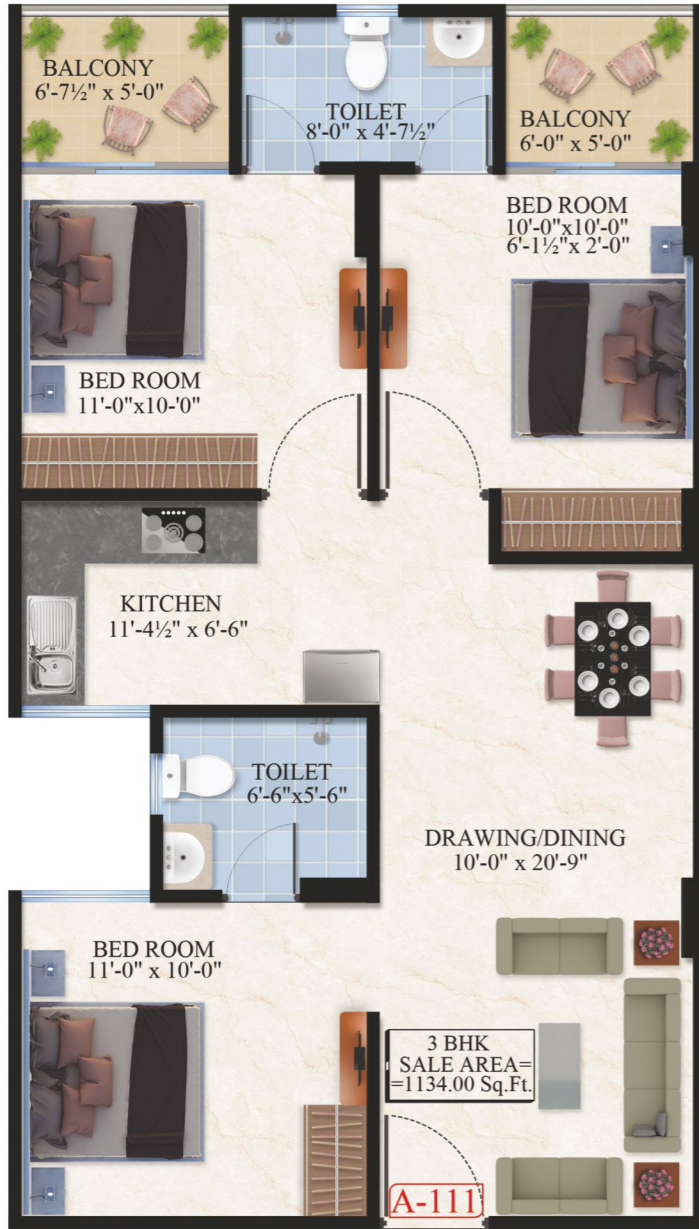


Flat No. 108 Floor Plan, 921 Sq. Ft.  
(BLOCK A)

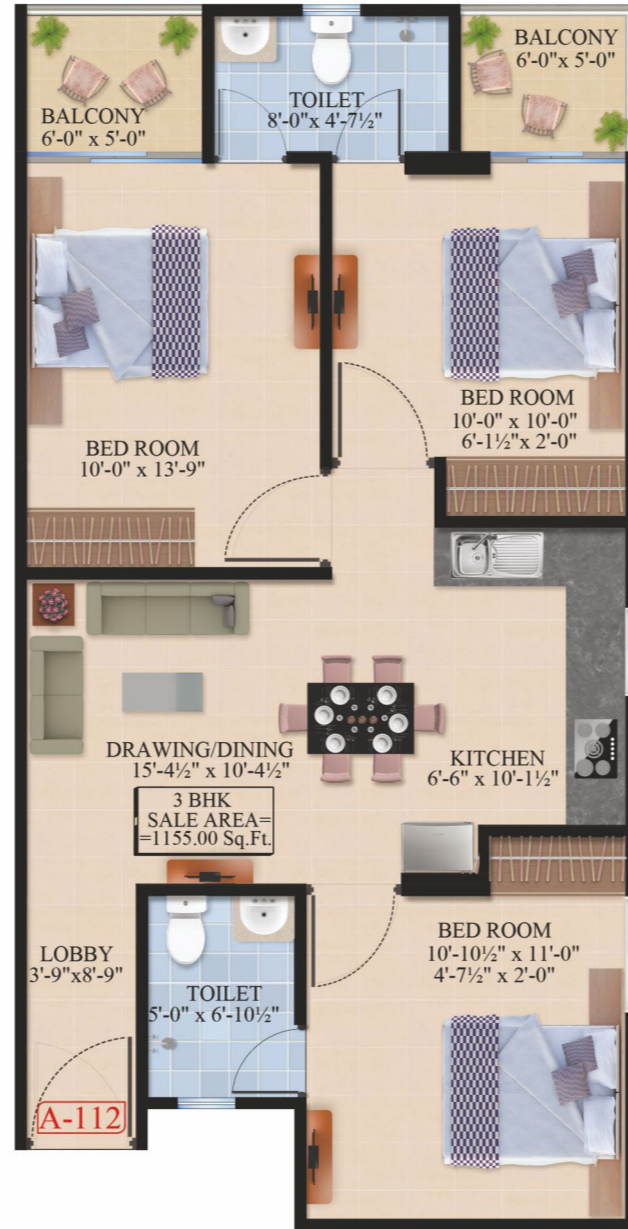
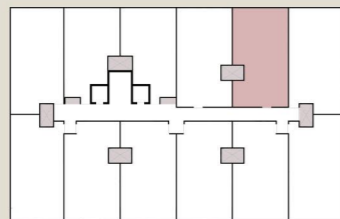




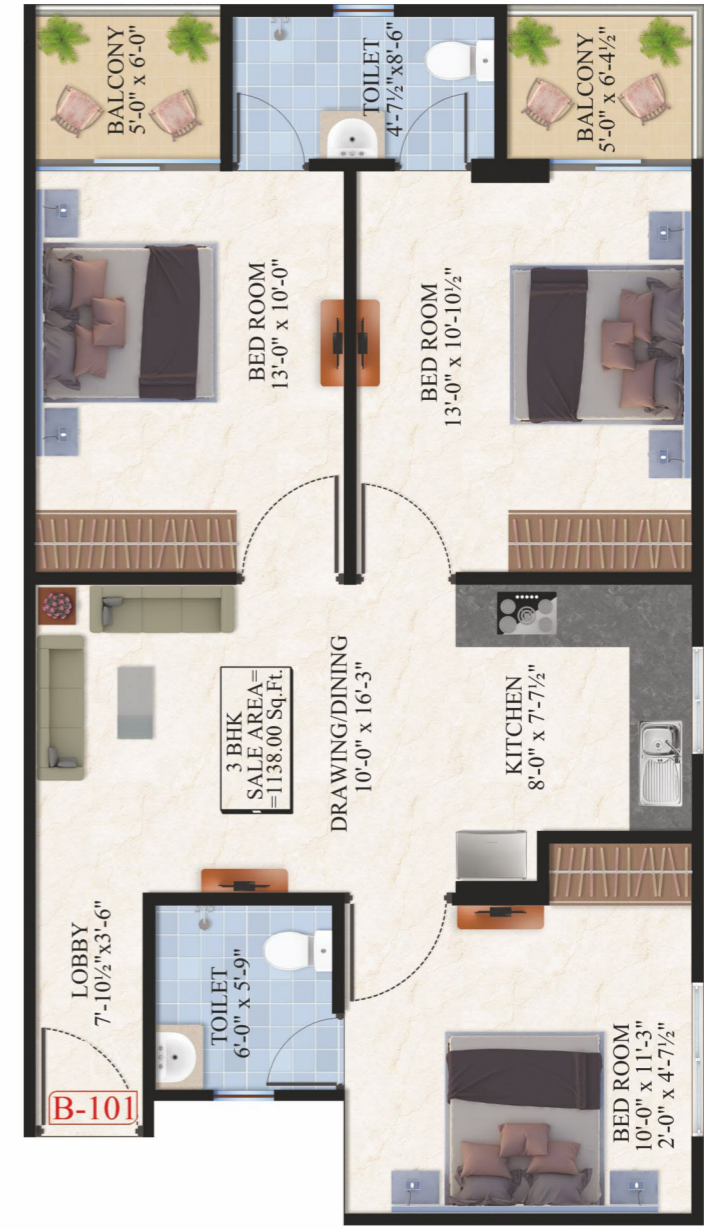
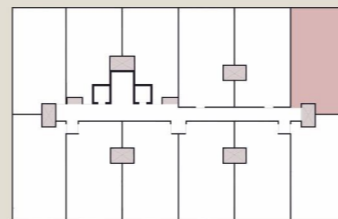
# FLATS FLOOR PLANS



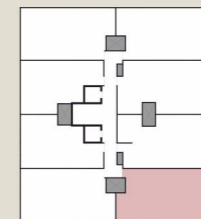
Flat No. 111 Floor Plan, 1134 Sq. Ft.  
(BLOCK A)



Flat No. 112 Floor Plan, 1155 Sq. Ft.  
(BLOCK A)

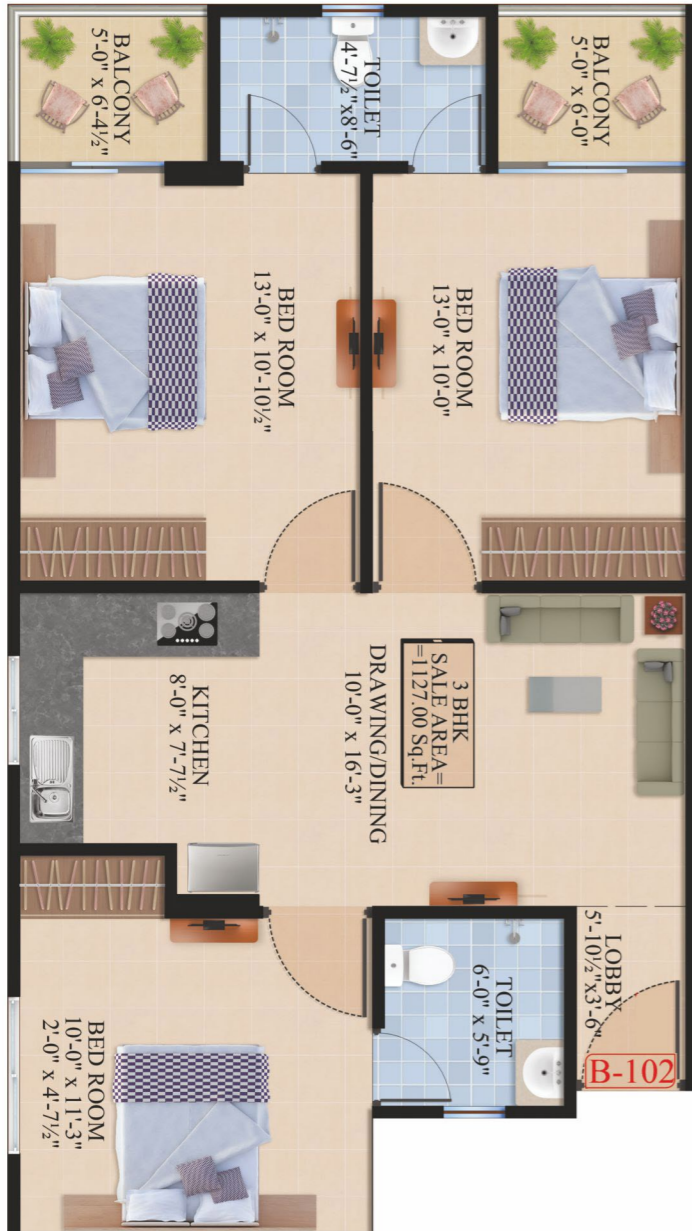


Flat No. 101 Floor Plan, 1138 Sq. Ft.  
(BLOCK B)

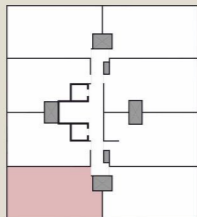




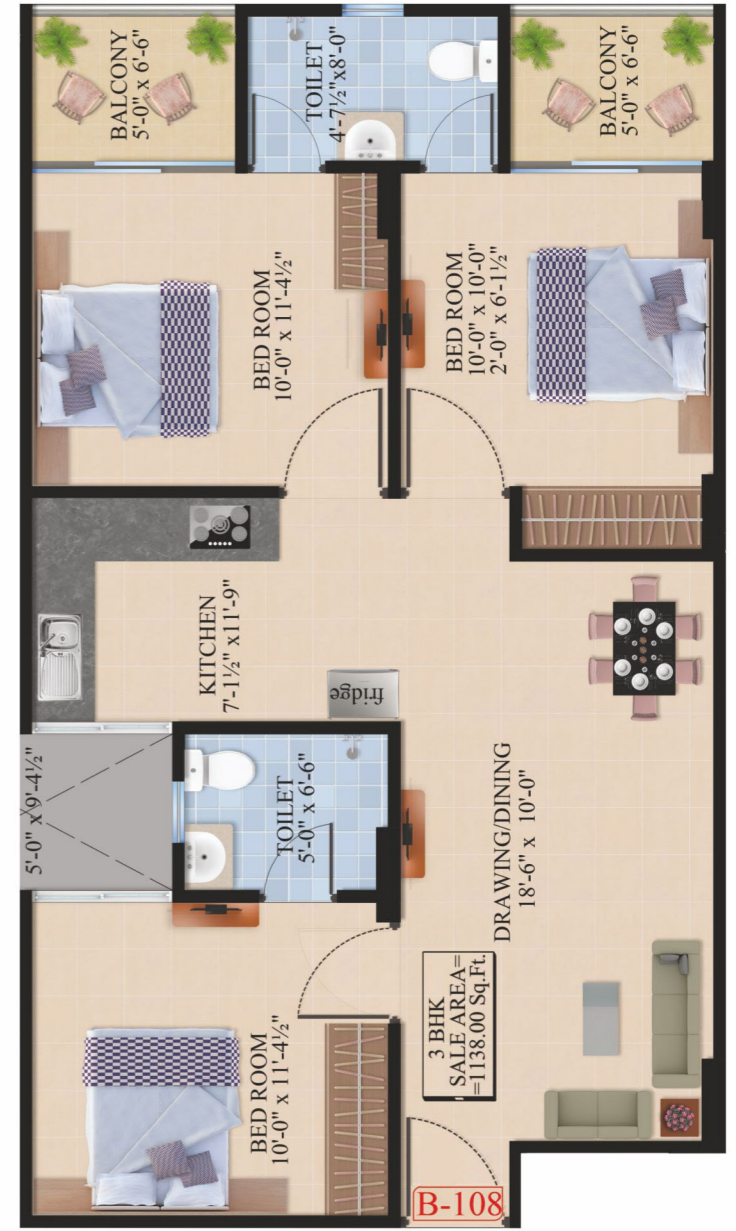
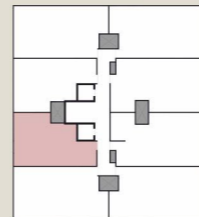
# FLATS FLOOR PLANS



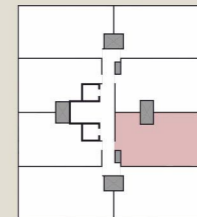
Flat No. 102 Floor Plan, 1127 Sq. Ft.  
**(BLOCK B)**



Flat No. 103 Floor Plan, 864 Sq. Ft.  
**(BLOCK B)**



Flat No. 108 Floor Plan, 1138 Sq. Ft.  
**(BLOCK B)**





Chordia's  
*Wonder*  
HOMES

Home that offers a

*Wholesome Lifestyle*

to your family...







**TERRACE FLOOR PLAN (BLOCK A)**



“ NOW FUN IS  
RIGHT WHERE  
YOU LIVE ”



**TYPICAL FLOOR PLAN (BLOCK B)**



# AMENITIES



**Power Backup  
(Common Area)**



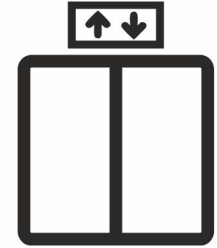
**Pollution Free  
Environment**



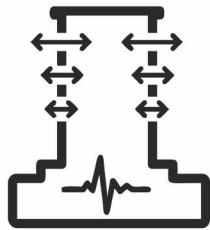
**Rainwater  
Harvesting**



**CCTV Camera**



**Highspeed Lifts**



**Earthquake Resistant  
Structure**



**Fire Equipment**



**Yoga Deck**



**E-Rickshaw**



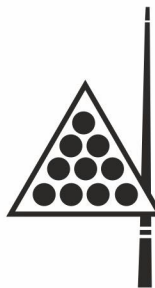
**Swimming Pool**



**Parking**



**Gymnasium**



**Indoor Games Room**



**Security**



**Terrace Garden**



# SPECIFICATIONS

## DRAWING/DINING

- Vitrified Tile Flooring
- Flush Door With Stone Door Frame
- Aluminum/Upvc Windows
- Tractor Emulsion Paint
- Modular electrical switches
- Copper piping for AC

## BEDROOMS

- Vitrified Tile Flooring
- Flush Door With Stone Door Frame
- Aluminum/Upvc Windows
- Tractor Emulsion Paint
- Modular electrical switches
- Copper piping for AC

## KITCHEN

- Vitrified Tile Flooring
- Granite Counters
- SS Sink
- Modular electrical switches
- Aluminum/Upvc Windows

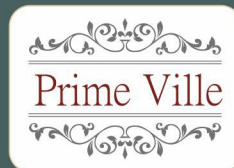
## WASH ROOM

- Anti-skid tiles for flooring
- Flush Door
- C. P. fittings of Parry ware/ Johnson or equivalent brand
- Sanitary ware of Jaguar/ Parry ware or equivalent brand
- Tractor Emulsion Paint

## OTHERS

- Power Backup for common areas
- Lighting fixtures in common areas
- M.S./S.S. Railing
- Security/CCTV System
- External Paint

### OUR COMPLETED PROJECTS



**3/4 BHK VILLAS**  
@ Main 200 ft. SEZ Road,  
Ajmer Road, Jaipur  
**90 Villas**



**3/4 BHK VILLAS**  
@ Main 200 ft., SEZ Road,  
Ajmer Road, Jaipur  
**47 Villas**



**3/4 BHK VILLAS**  
Chordia City,  
Ajmer Road, Jaipur  
**35 Villas**



**1/2/3 BHK APARTMENTS**  
Chordia City,  
Ajmer Road, Jaipur  
**340 APARTMENTS**



**2/3 BHK APARTMENTS**  
Chordia City,  
Ajmer Road, Jaipur  
**108 APARTMENTS**



**3/4 BHK APARTMENTS**  
Near Hotel Marriott,  
Tonk Road, Jaipur  
**252 APARTMENTS**



**2/3 BHK APARTMENTS**  
Mansarovar Extension,  
Jaipur  
**226 APARTMENTS**



**2/3 BHK APARTMENTS**  
@  
Mansarovar, Jaipur  
**71 APARTMENTS**

### OUR ONGOING PROJECTS

### UPCOMING



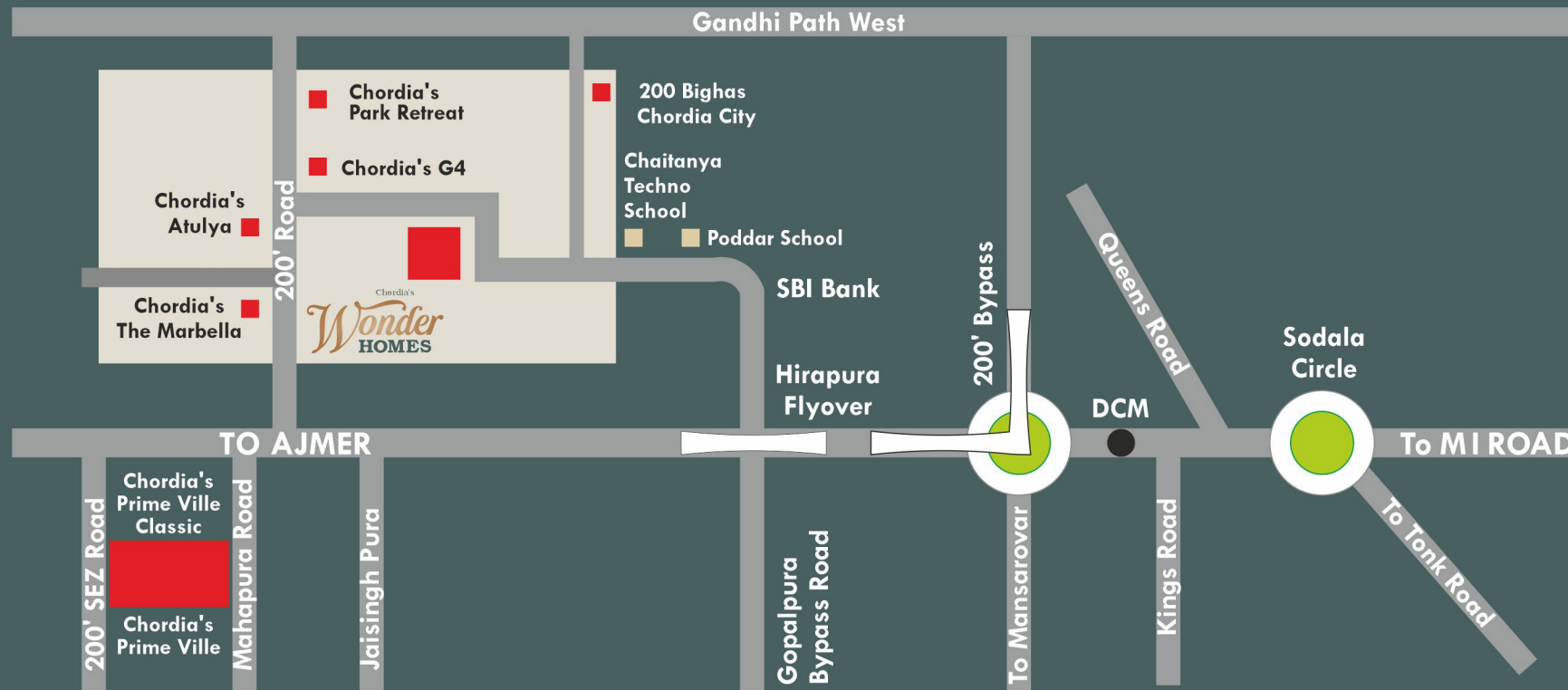
**COMMERCIAL SPACE**  
@  
Main Tonk Road,  
Jaipur



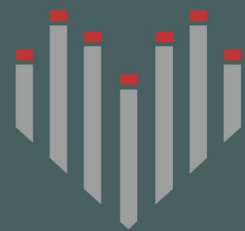
**COMMERCIAL SPACE**  
@  
Queens Road, Vaishali Nagar  
Jaipur



# LOCATION MAP



Developers :



**CHORDIA'S**  
EXPECT MORE

Corp. Office : Chordia Enclave,  
29, Janpath, Shyam Nagar, Jaipur-302019 (Raj.)

Disclaimer: This brochure is not a legal document and just describes the developers intended conceptual plan. Specification and details provided are tentative and may change at sole discretion of developer and/ or the architects.