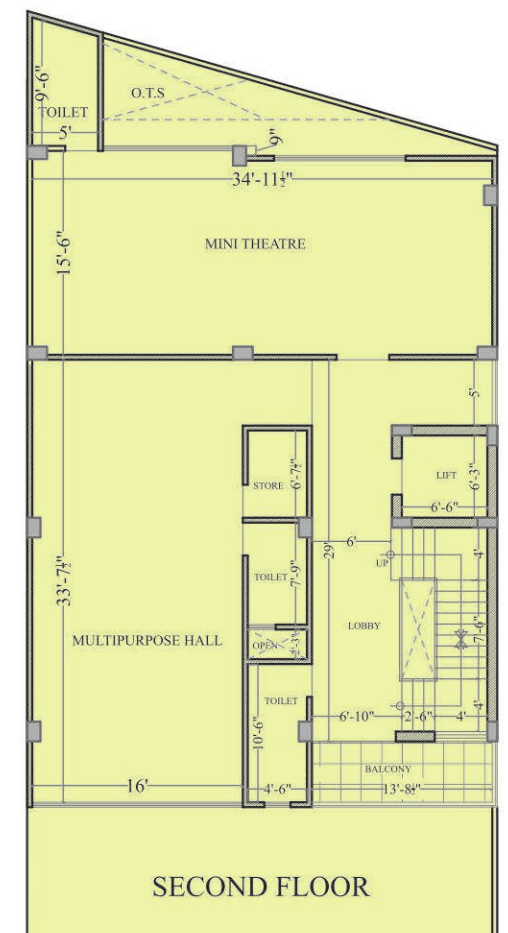
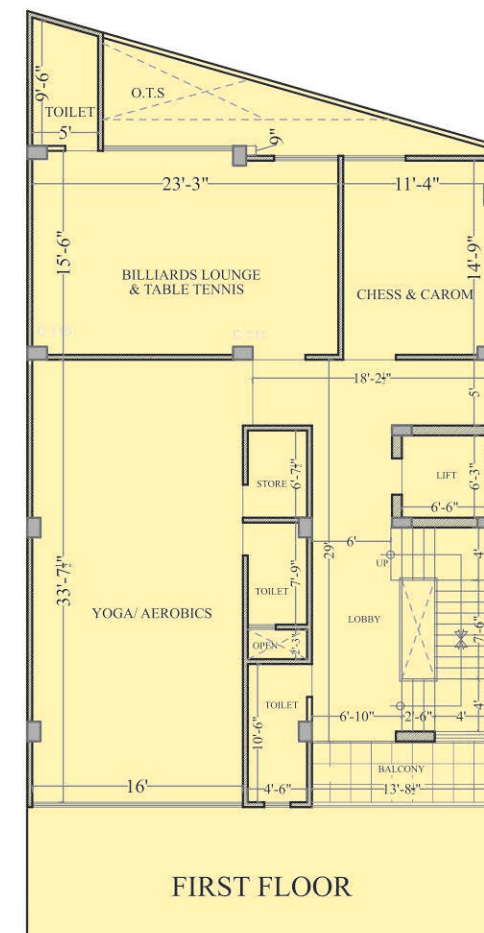




2/3 BHK Luxury Apartments

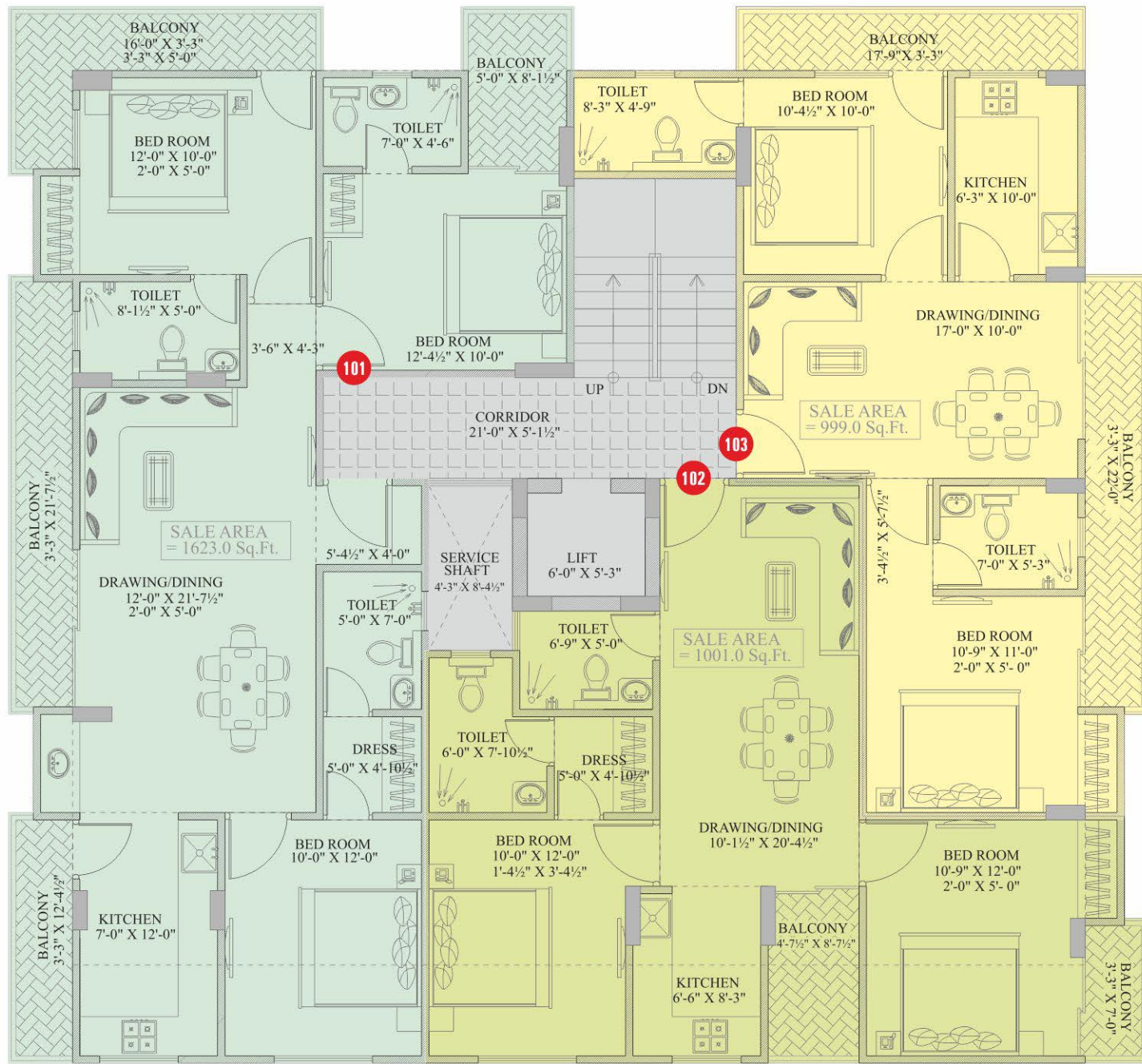
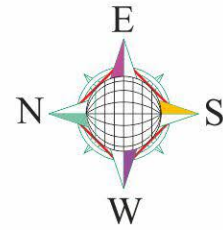
THE CLUB

G4 is made to complement your lifestyle, with a world class clubhouse and the best outdoor and indoor amenities within the complex for your exclusive use. Work up a sweat in the gymnasium and cool off in the pool while your kids play in their own area.



Tower- B,C,D,E,F

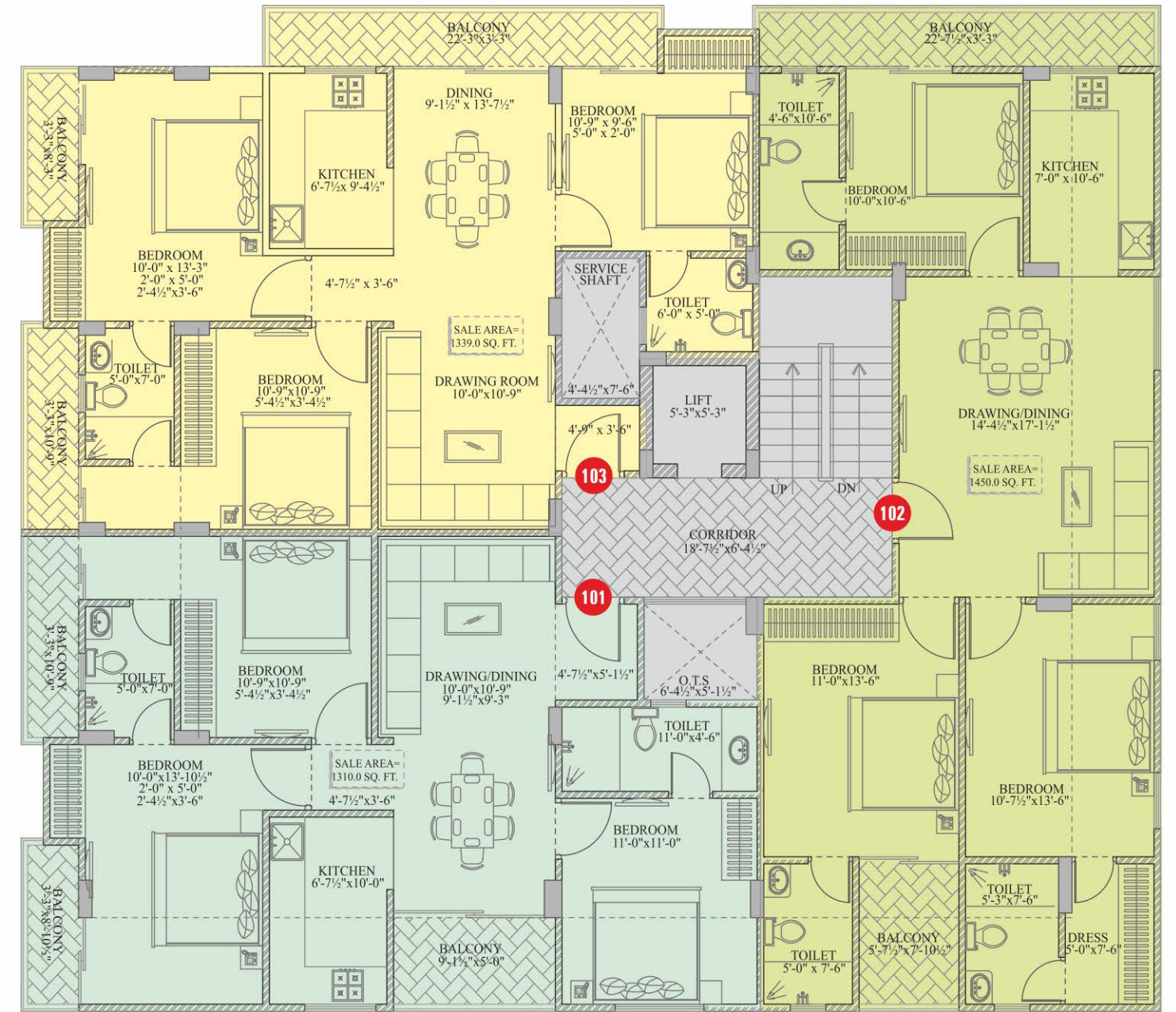
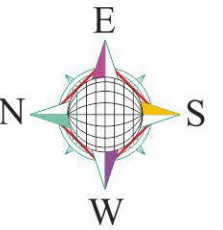
- ▶ 3 BHK 101 : 1623 Sq.ft.
- ▶ 2 BHK 102 : 1001 Sq.ft.
- ▶ 2 BHK 103 : 999 Sq.ft.



TYPICAL 1st TO 4th FLOOR PLAN

Tower- G

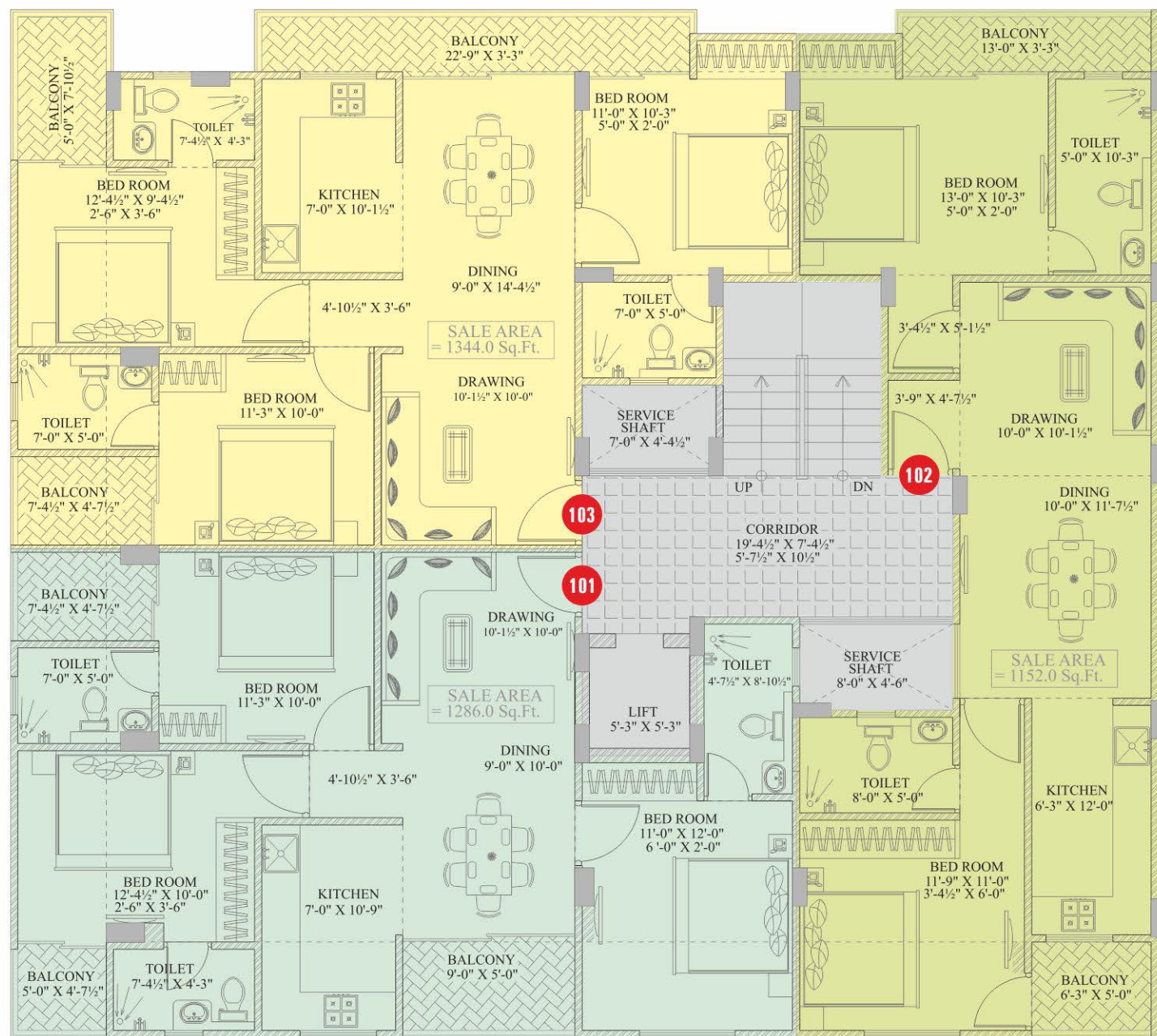
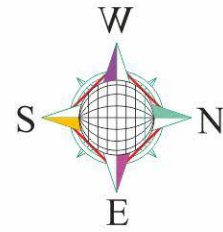
- ▶ 3 BHK 101 : 1310 Sq.ft.
- ▶ 3 BHK 102 : 1450 Sq.ft.
- ▶ 3 BHK 103 : 1339 Sq.ft.



TYPICAL 1st TO 4th FLOOR PLAN

Tower- H

- ▶ 3 BHK 101 : 1286 Sq.ft.
- ▶ 2 BHK 102 : 1152 Sq.ft.
- ▶ 3 BHK 103 : 1344 Sq.ft.



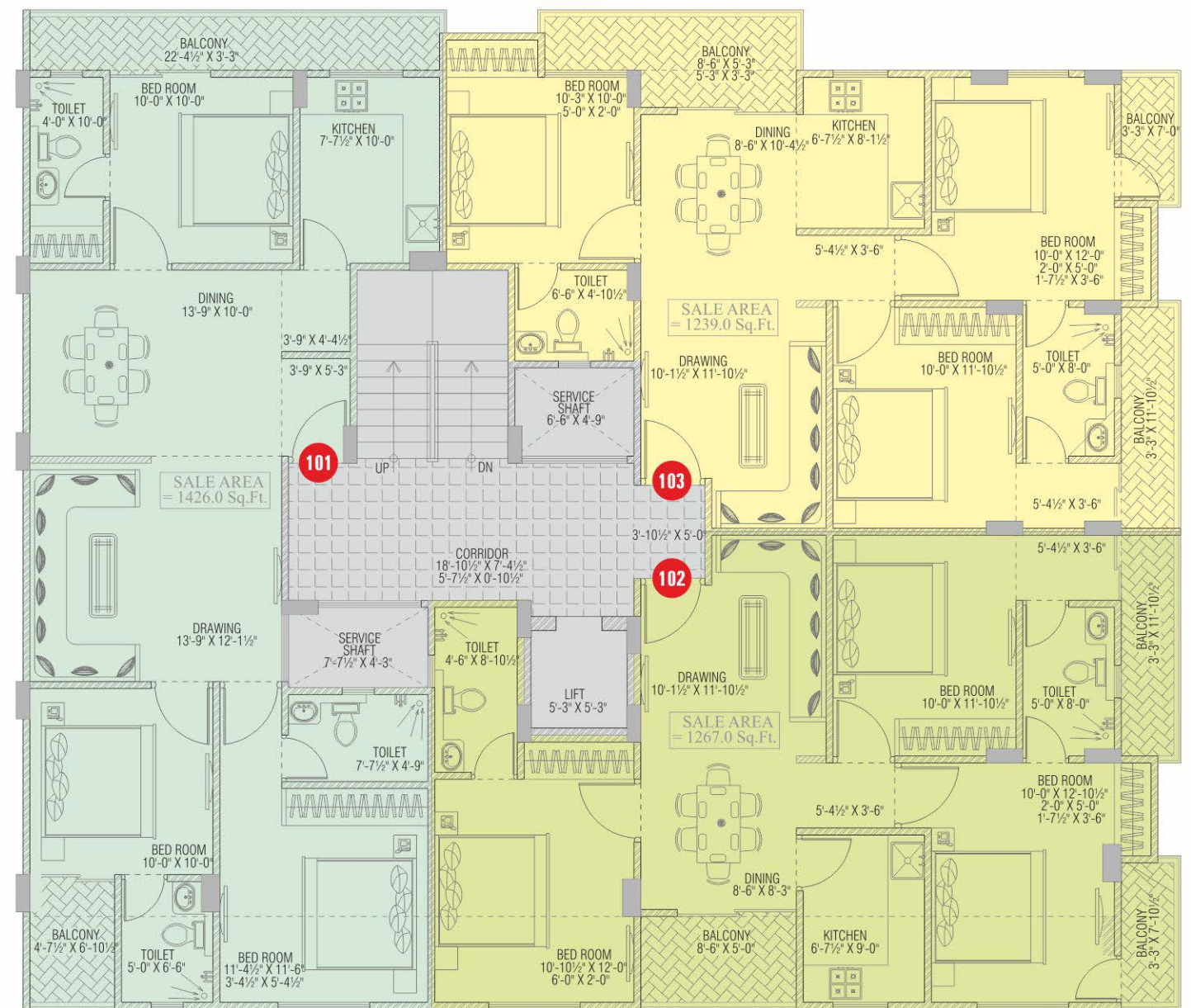
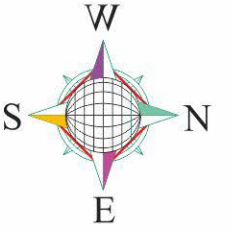
ROAD

TYPICAL 1st TO 4th FLOOR PLAN

ROAD

Tower- I

- ▶ 3 BHK 101 : 1426 Sq.ft.
- ▶ 3 BHK 102 : 1267 Sq.ft.
- ▶ 3 BHK 103 : 1239 Sq.ft.



ROAD

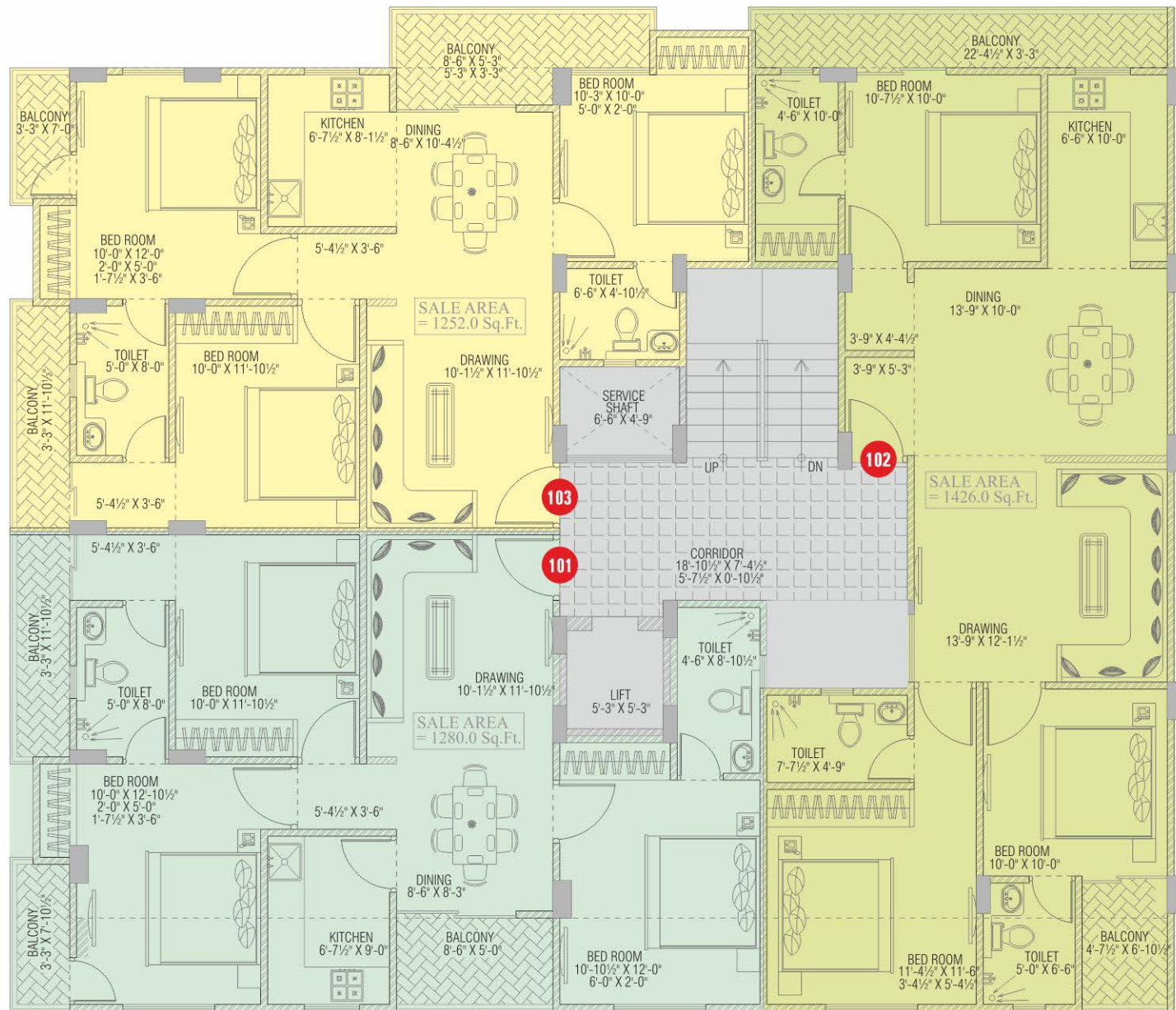
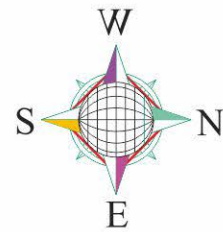
TYPICAL 1st TO 4th FLOOR PLAN

ROAD

S P E C I F I C A T I O N S

Tower- J

- ▶ 3 BHK 101 : 1280 Sq.ft.
- ▶ 3 BHK 102 : 1426 Sq.ft.
- ▶ 3 BHK 103 : 1252 Sq.ft.



ROAD

TYPICAL 1st TO 4th FLOOR PLAN

ROAD

DRAWING/DINING

- Vitrified tile flooring
- Flush door
- Aluminium/UPVC windows
- Texture paint
- Modular electrical switches
- Copper piping for AC
- False Ceiling

BALCONY & TERRACE

- Anti-skid tile flooring
- M.S./S.S. railing

BEDROOMS

- Vitrified tile flooring
- Flush door
- Aluminium/UPVC windows
- Plastic paint
- Modular electrical switches
- Copper piping for AC

KITCHEN

- Vitrified tile flooring
- Granite counters
- Modular kitchen
- Gas pipe line
- SS sink
- Aluminium/UPVC door-windows
- Modular electrical switches
- Plastic paint
- Chimney, Geyser, RO

OTHERS

- Common area-tile/stone flooring
- External-texture paint
- M.S./S.S. railing

WASH ROOM

- Anti-skid tiles flooring
- Flush door
- Sanitary ware of Jaguar/Equivalent
- Plastic paint

NOTES