

**LOCATION MAP**



*It's time to move!*

**OUR COMPLETED PROJECTS**

|   |   |   |
|---|---|---|
| <br><b>Prime Ville</b><br>3/4 BHK VILLAS (90 VILLAS)<br>@ Main 200 ft. SEZ Road, Ajmer Road, Jaipur | <br><b>Prime Ville Classic</b><br>3/4 BHK VILLAS (47 VILLAS)<br>@ Main 200 ft. SEZ Road, Ajmer Road, Jaipur | <br><b>The Marbella</b><br>Stylish Villa Living<br>3/4 BHK VILLAS (35 VILLAS)<br>@ 200 ft. Road, Chordia City, Ajmer Road, Jaipur |
|---|---|---|

**OUR ONGOING PROJECTS**

|   |  |  |
|---|--|--|
| <br><b>Utsav</b><br>2/3 BHK APARTMENTS (226 APARTMENTS)<br>@ Mansarovar Extension, Jaipur | <br><b>अतुल्य</b><br>1/2/3 BHK APARTMENTS (340 APARTMENTS)<br>@ 200 ft. Road, Chordia City, Ajmer Road, Jaipur | <br><b>THE CROWN</b><br>IT BELONGS TO YOU<br>3/4 BHK APARTMENTS (252 APARTMENTS)<br>@ Near Hotel Marriott, Tonk Road, Jaipur |
|---|--|--|

Developers :



**CHORDIA'S**  
EXPECT MORE

Corp. Office : Chordia Enclave,  
29, Janpath, Shyam Nagar, Jaipur-302019 (Raj.)

Disclaimer: This brochure is not a legal document and just describes the developers intended conceptual plan. Specification and details provided are tentative and may change at sole discretion of developer and/ or the architects.

artzonestudio.in # 9251957112



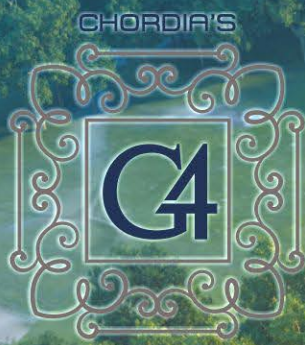
RERA No.: RAJ/P/2019/918  
RERA Website : rera.rajasthan.gov.in

CHORDIA'S

**2/3 BHK Luxury Apartments**

@ 200 ft. Road, Chordia City,  
Kamla Nehru Nagar, Ajmer Road, Jaipur





where  
you live is your  
CHOICE

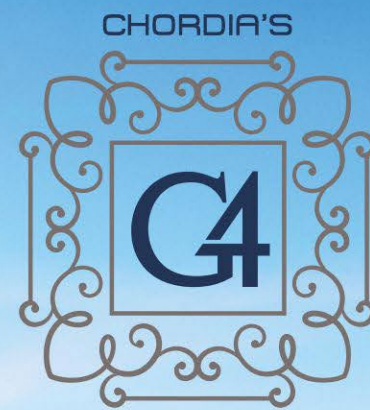
2/3 BHK  
Luxury Apartments



### About Us

From last 11 years Chordia's group of builders is providing itself by making true sense of its punchline "We make your dream". Chordia's group of builders is the one who has done a fabulous work by changing the lifestyle of the Jaipurites and fulfilled the dream of thousands of people. The Journey that was started from Prime Ville is now reaching to new heights. The Marbella is perfectly dominated to provide a dreamful life. Utmost luxury, superb construction quality and state-of-the-art technique makes the Chordia's group of builders a real leader of the industry. The milestone achieved by Chordia's group of builders is a result of hard work, positive attitude, dedication

and prudent thinking of Chairman Mr. Vinay Chordia. Following the mantra "Dream with work can develop the World" Chordia's group of builders is progressing towards changing the parameters of real estate industry. The vision of Chordia's group of builders is "to build buildings not only with cement and steel but with a humane touch, to provide better spaces and better living to all its customers spanning residential, commercial, integrated townships, malls, multiplexes and hospitality sectors." Commitment, integrity, quality and innovation are the main core values of Chordia's group of builders that inspires the group to perform some steps ahead than the competitor.



### 2/3 BHK Luxury Apartments

- YOUR DREAM HOMES IN THE HEART OF MODERN JAIPUR
- A PERFECT LOCATION TO LIVE LIFE IN DREAMS
- A PLACE WHICH IS CONNECTED WITH THE NATURE

## LOCATION ADVANTAGE

### LANDMARK

|                          |         |
|--------------------------|---------|
| Main Market              | 500mtrs |
| Heerapura Flyover        | 1.6km   |
| Gandhipath               | 2.5km   |
| Vaishali Nagar           | 5km     |
| Super Market             | 5km     |
| Mansarovar Metro Station | 6km     |
| Railway Station          | 10km    |
| Sindhi Camp              | 12km    |
| Ajmeri Gate              | 15km    |

### HOSPITAL

|                   |       |
|-------------------|-------|
| Rawal             | 3km   |
| Shalby            | 4km   |
| Ashoka            | 4.5km |
| Asopa             | 4.5km |
| Global Heart      | 6km   |
| Metro Mas         | 8km   |
| RUJ (Coming Soon) | 2km   |

### BANK

|       |     |
|-------|-----|
| SBI   | 1km |
| ICICI | 3km |
| AXIS  | 3km |

### RESTAURANTS/FUN ZONE

|              |     |
|--------------|-----|
| Highway king | 2km |
| Apple Inn    | 3km |
| INOX         | 4km |
| Mc Donolds   | 4km |
| RJ 14        | 4km |

### COLLEGE

|            |       |
|------------|-------|
| Rawat Girl | 1.5km |
| Chanakya   | 2km   |
| RIET       | 3km   |
| JK LU      | 10km  |

### SCHOOLS

|                        |         |
|------------------------|---------|
| Shree Chaitanya School | 500mtrs |
| Poddar                 | 500mtrs |
| Surendra public        | 1km     |
| Sophiya                | 3km     |
| DPS & STEP by STEP     | 6 km    |
| St. Xaviers            | 11km    |





Cardio Area



AC GYM



Mini Theatre



Swimming Pool



Yoga/Aerobics



Party Lawn



DTH Provision



Letter Box



Power Backup



CCTC Camera



Safety & Security



Intercom



Rain Water Harvesting



Fire Extinguishers



Parking



Chess/Carram



TT/Billiards



AC Hall



E-Rickshaw



High Speed lift



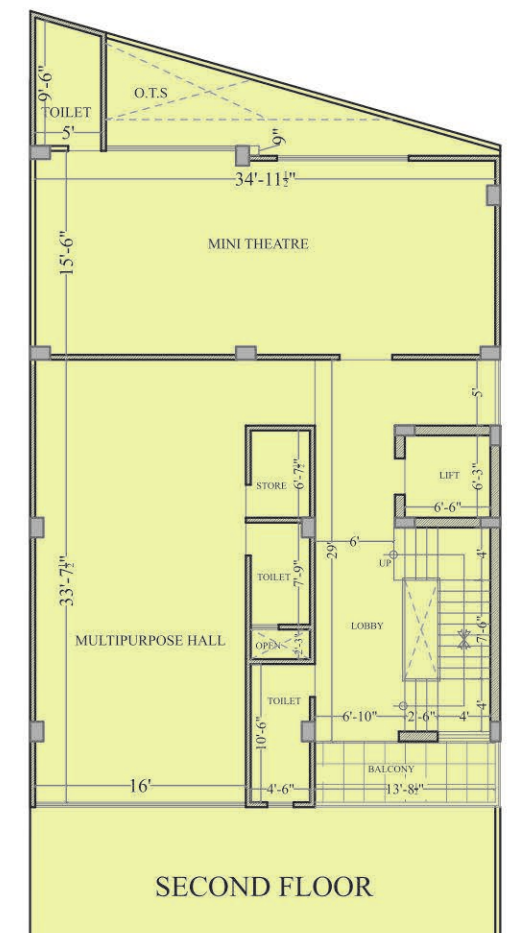
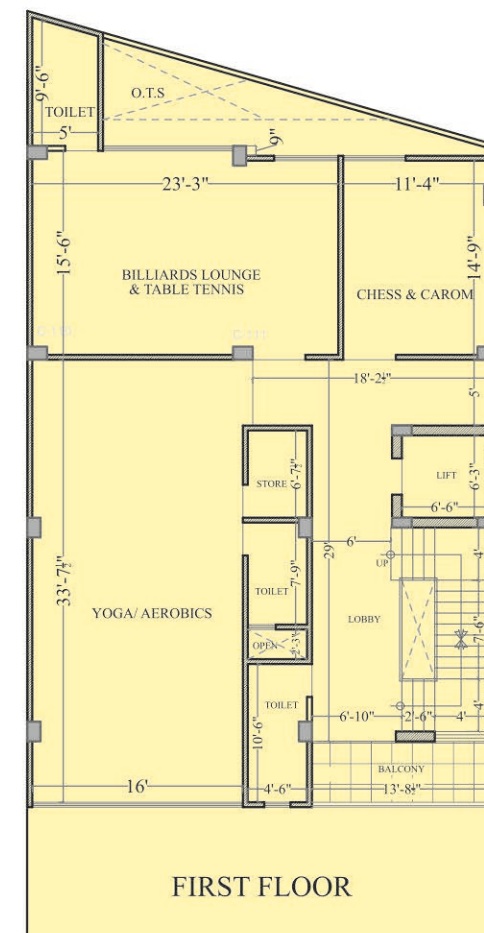
Kids Play Area



2/3 BHK Luxury Apartments

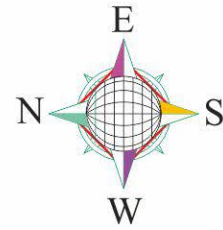
## THE CLUB

G4 is made to complement your lifestyle, with a world class clubhouse and the best outdoor and indoor amenities within the complex for your exclusive use. Work up a sweat in the gymnasium and cool off in the pool while your kids play in their own area.



### Tower- B,C,D,E,F

- ▶ 3 BHK 101 : 1623 Sq.ft.
- ▶ 2 BHK 102 : 1001 Sq.ft.
- ▶ 2 BHK 103 : 999 Sq.ft.



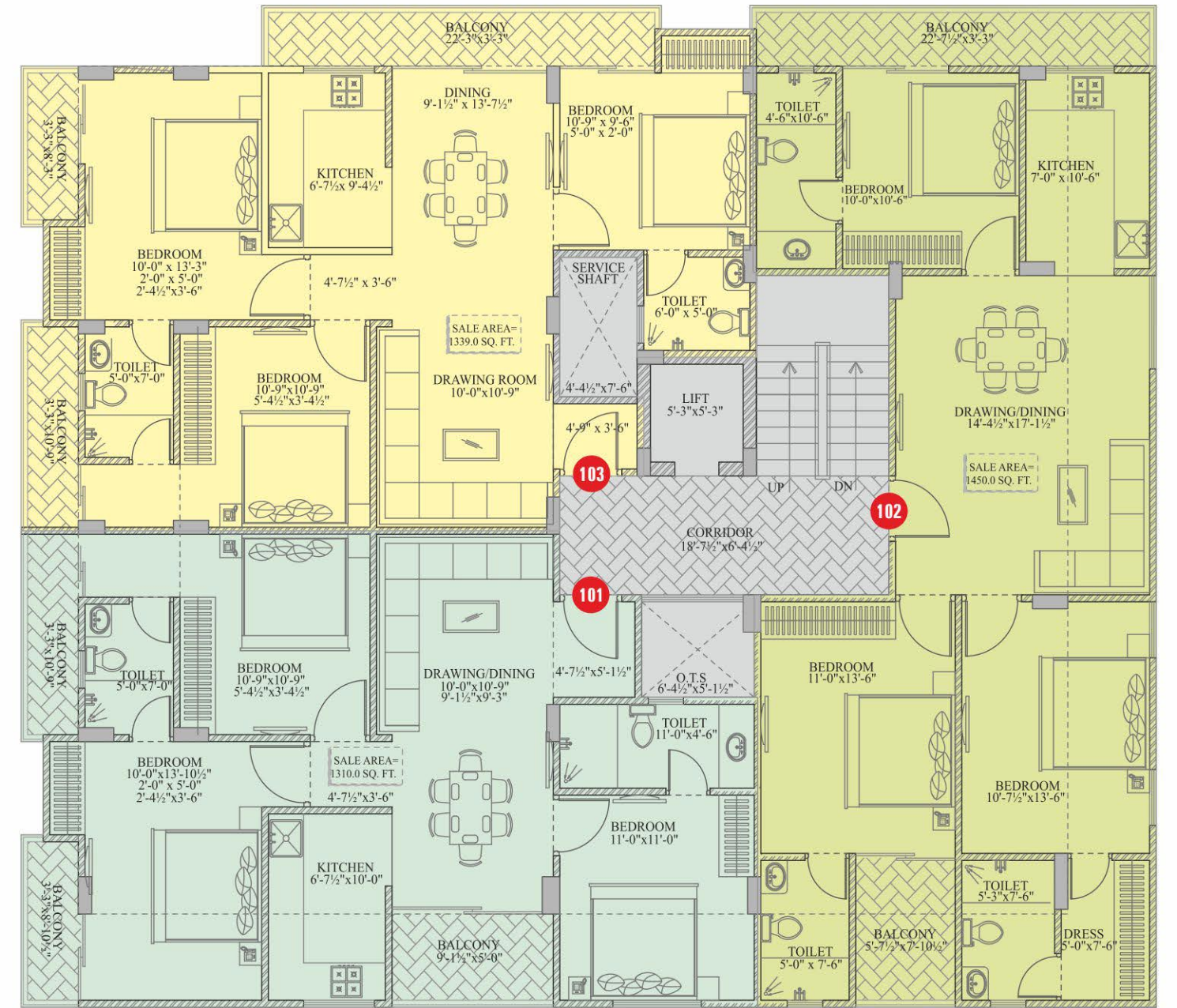
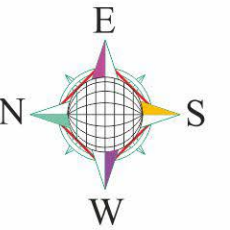
ROAD

TYPICAL 1st TO 4th FLOOR PLAN

ROAD

### Tower- G

- ▶ 3 BHK 101 : 1310 Sq.ft.
- ▶ 3 BHK 102 : 1450 Sq.ft.
- ▶ 3 BHK 103 : 1339 Sq.ft.



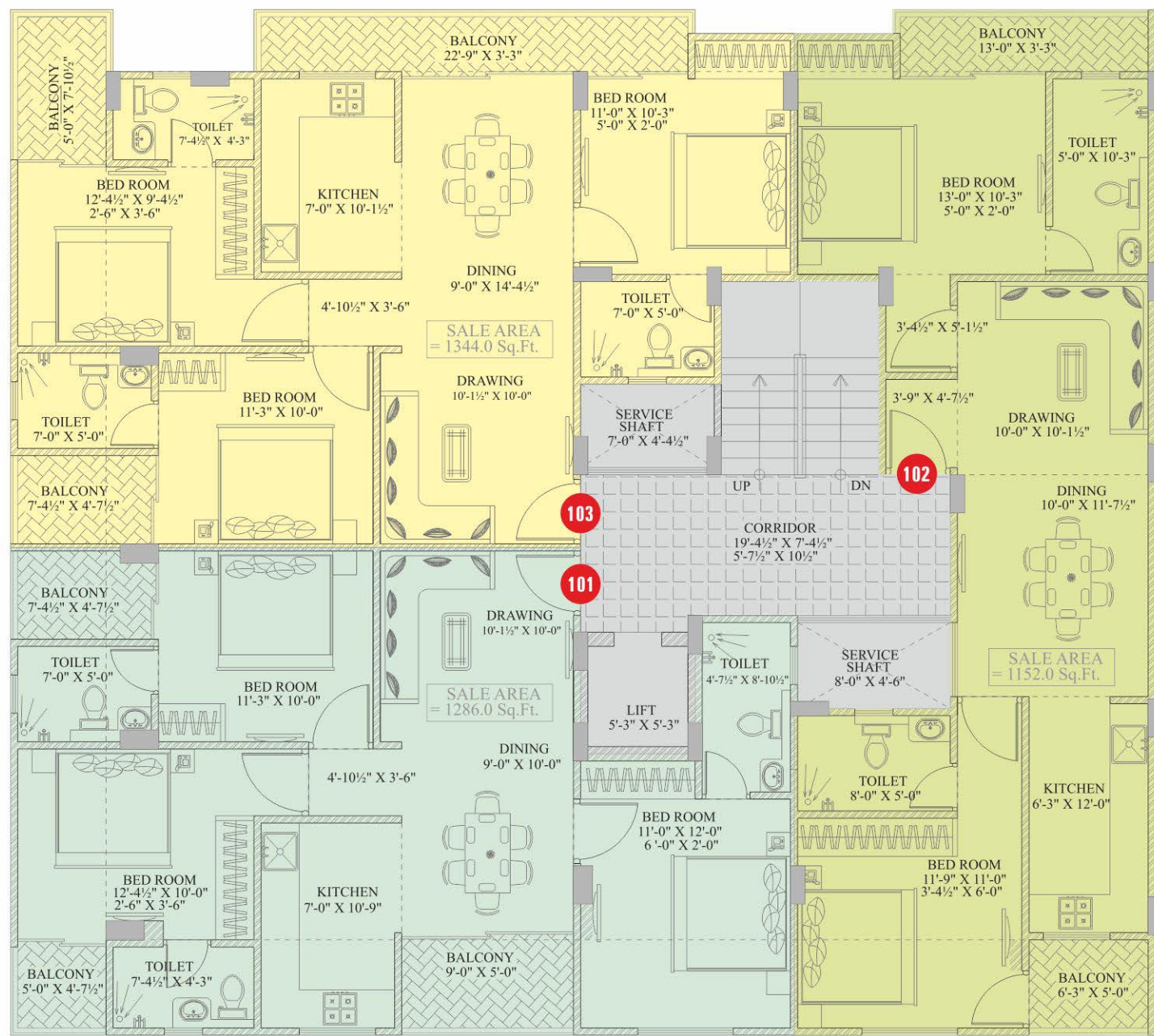
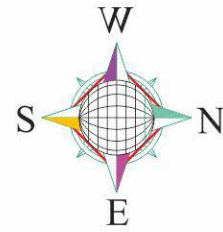
ROAD

TYPICAL 1st TO 4th FLOOR PLAN

ROAD

## Tower- H

- ▶ 3 BHK 101 : 1286 Sq.ft.
- ▶ 2 BHK 102 : 1152 Sq.ft.
- ▶ 3 BHK 103 : 1344 Sq.ft.



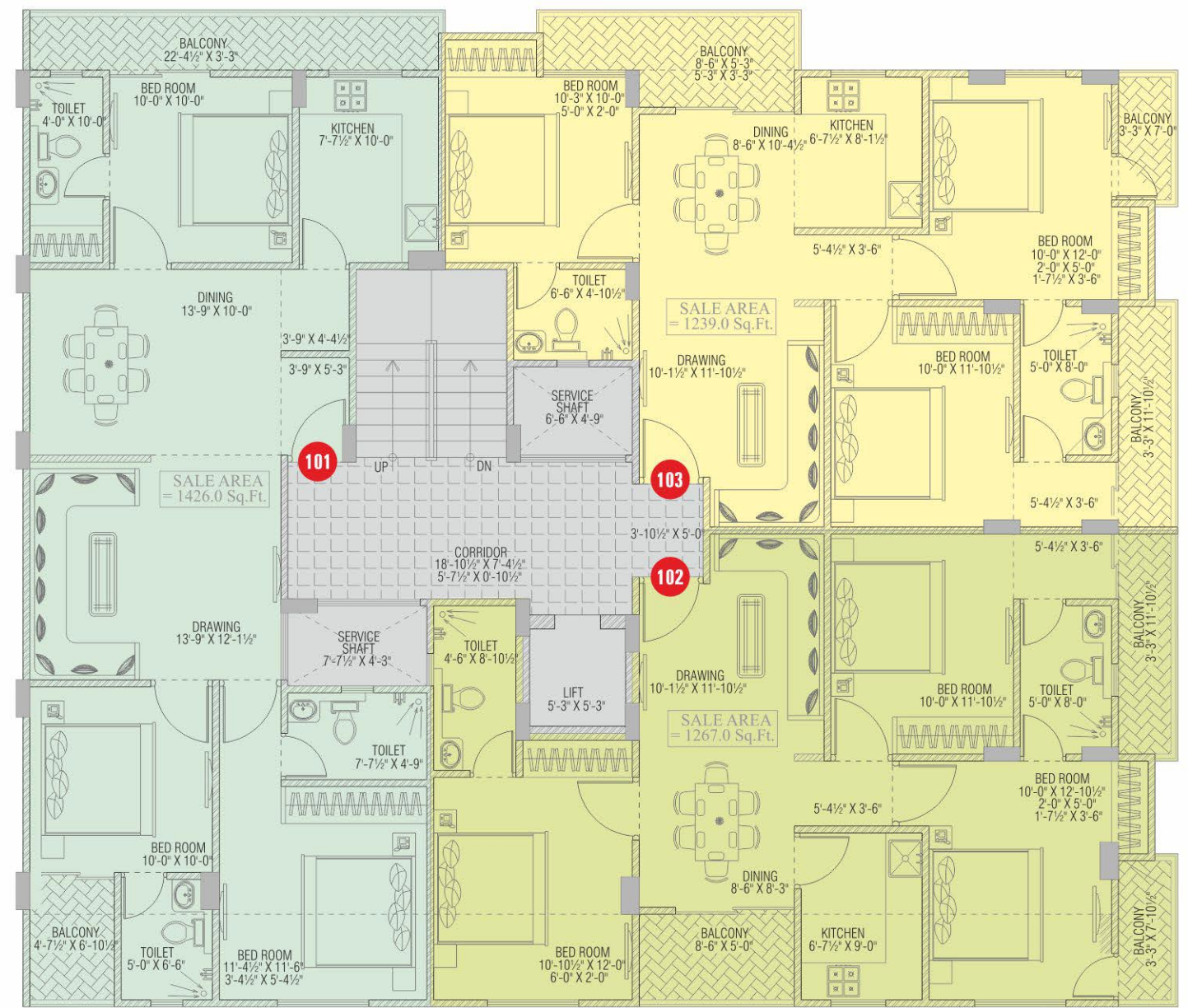
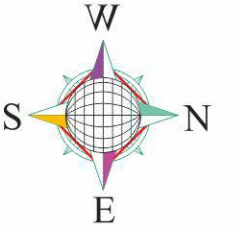
ROAD

TYPICAL 1st TO 4th FLOOR PLAN

ROAD

## Tower- I

- ▶ 3 BHK 101 : 1426 Sq.ft.
- ▶ 3 BHK 102 : 1267 Sq.ft.
- ▶ 3 BHK 103 : 1239 Sq.ft.



ROAD

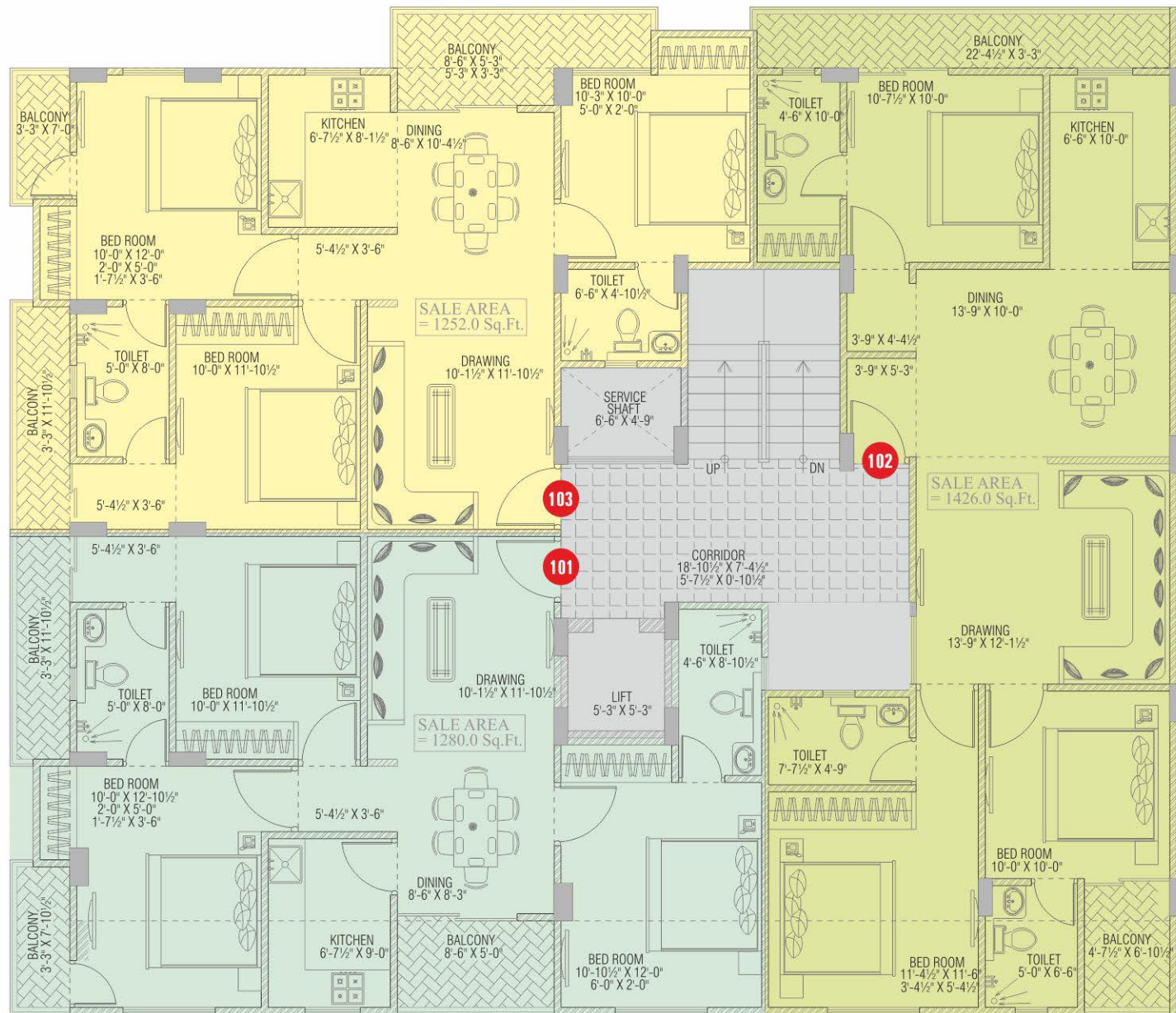
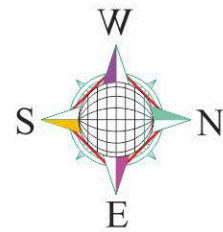
TYPICAL 1st TO 4th FLOOR PLAN

ROAD

# S P E C I F I C A T I O N S

## Tower- J

- ▶ 3 BHK 101 : 1280 Sq.ft.
- ▶ 3 BHK 102 : 1426 Sq.ft.
- ▶ 3 BHK 103 : 1252 Sq.ft.



ROAD

TYPICAL 1st TO 4th FLOOR PLAN

ROAD

### DRAWING/DINING

- Vitrified tile flooring
- Flush door
- Aluminium/UPVC windows
- Texture paint
- Modular electrical switches
- Copper piping for AC
- False Ceiling

### BALCONY & TERRACE

- Anti-skid tile flooring
- M.S./S.S. railing

### BEDROOMS

- Vitrified tile flooring
- Flush door
- Aluminium/UPVC windows
- Plastic paint
- Modular electrical switches
- Copper piping for AC

### KITCHEN

- Vitrified tile flooring
- Granite counters
- Modular kitchen
- Gas pipe line
- SS sink
- Aluminium/UPVC door-windows
- Modular electrical switches
- Plastic paint
- Chimney, Geyser, RO

### OTHERS

- Common area-tile/stone flooring
- External-texture paint
- M.S./S.S. railing

### WASH ROOM

- Anti-skid tiles flooring
- Flush door
- Sanitary ware of Jaguar/Equivalent
- Plastic paint

## NOTES