



CHORDIA'S  
EXPECT MORE

CHORDIA'S   
*Aashiyana*

---

YOUR WINGS TO LUXURY

---



1 , 2 & 3 BHK Luxury Apartments

WELCOME TO

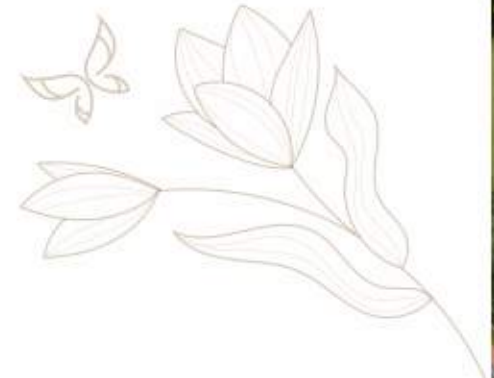
CHORDIA'S   
*Aashiyana*  
YOUR WINGS TO LUXURY

When Lush Greens seep through your window pane

When you feel connected with every lane

When the surrounding luxury makes you insane

Believe us that it's your best gain!



Images are for illustration purposes only.

Images are for illustration purposes only.



**PROJECT LOCATION**

Plot No. GH-8, Gokul Nagar Scheme, Gokulpura, Jhotwara, Jaipur



SCAN FOR LOCATION

Shown here is an unscaled pictorial, indicative representation of certain elements, locations, landmarks that may be present in and around the project site and is not a map. The Developer makes no representations regarding existence of any landmarks/locations shown above.



Images are for illustration purposes only.

Images are for illustration purposes only.

  
HEALTH  
AMENITIES



YOGA/AEROBICS AREA



ROOFTOP SWIMMING POOL



KIDS PLAY AREA



CARDIO AREA



AC GYMNASIUM

Take a pause from your busy life and spend some time on your health and fitness. Let your body achieve activeness, relaxation and fitness with all our health amenities.

 to  
HEALTH & HAPPINESS

Images are for illustration purposes only.

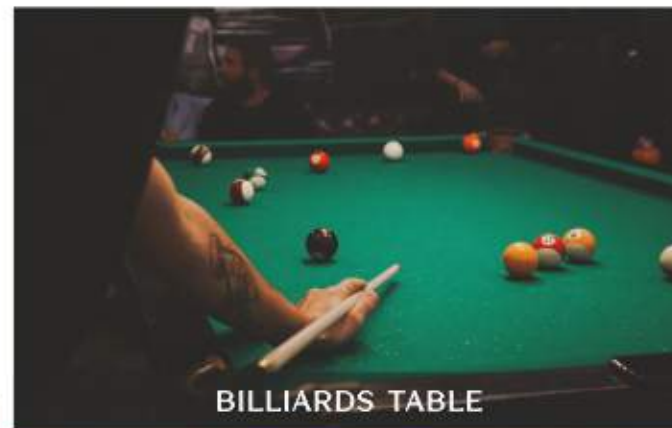
  
RECREATIONAL  
AMENITIES



MINI THEATER

Enjoy a life buzzing with activities, filled with excitement, laughter, alive with beautiful human emotions to let you bond together with everyone and live an active life.

Images are for illustration purposes only.



BILLIARDS TABLE



MULTIPURPOSE HALL



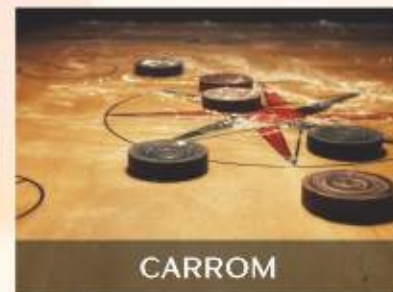
PARTY LAWN



CHESS



TABLE TENNIS



CARROM

 to  
LEISURE & LUXURY



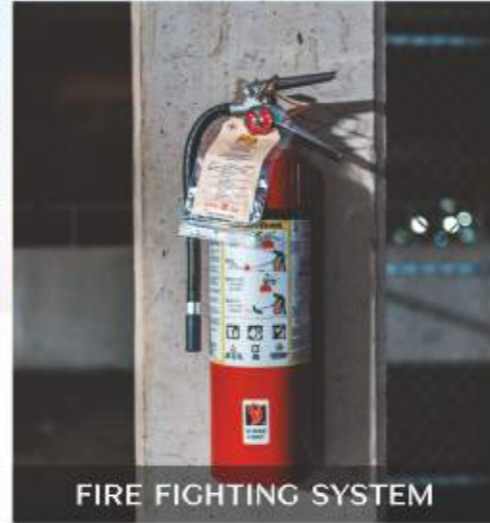
**SECURITY AMENITIES**



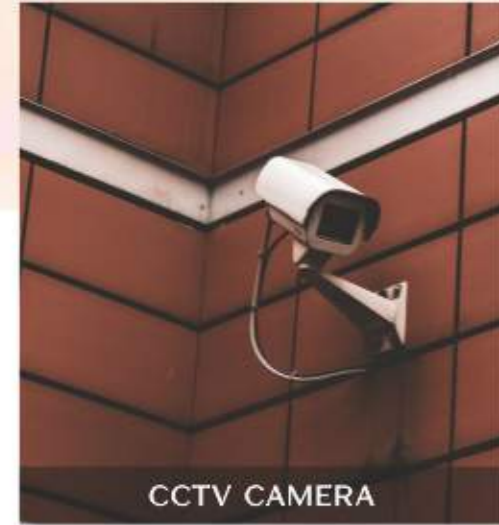
SAFETY & SECURITY



E-RICKSHAW



FIRE FIGHTING SYSTEM



CCTV CAMERA



INTERCOM WITH INSTRUMENT



WELL ORGANIZED PARKING

Gated society with round the clock security and maintenance service. We provide a great neighborhood, easy accessibility, open spaces, and freedom to build your dream home.

*Wings* to  
**SECURITY & PEACE**

Images are for illustration purposes only.

**CONVENIENCE AMENITIES**



EV CHARGING POINTS ( 5 POINTS )

Relish a super luxurious home in a complex which offers the most exclusive facilities and treatments to the residents. Live in a hub of lavishness surrounded with nature's beauty.

Images are for illustration purposes only.



STP



RAIN WATER HARVESTING SYSTEM



DTH PROVISION

*Wings* to  
**COMFORT & EASE**



POWER BACKUP FOR COMMON AREAS



HIGH SPEED LIFT

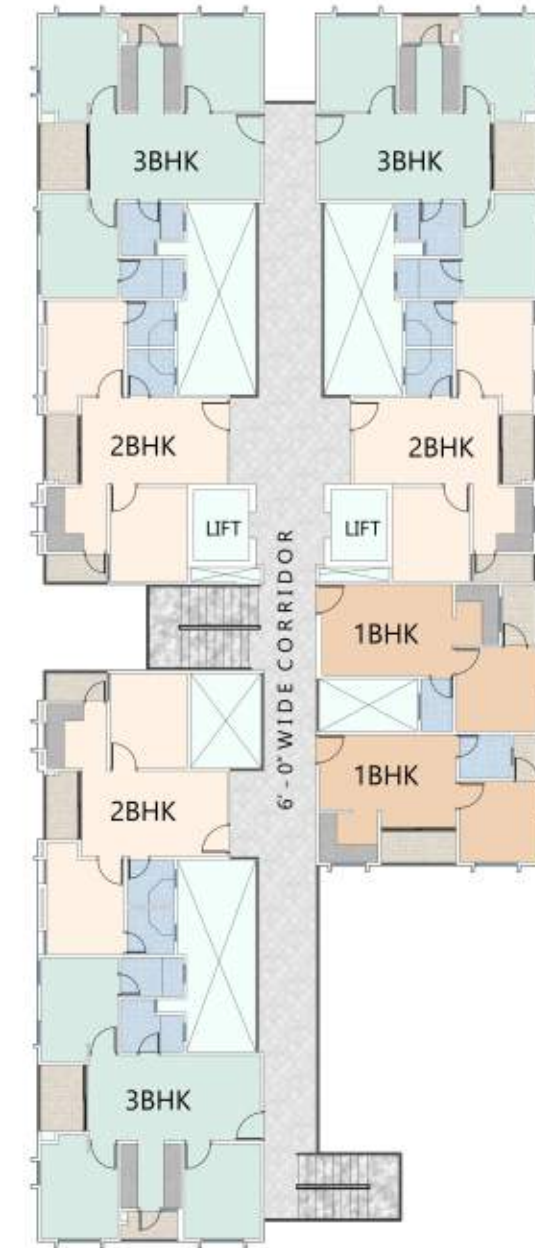
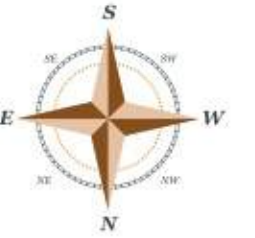




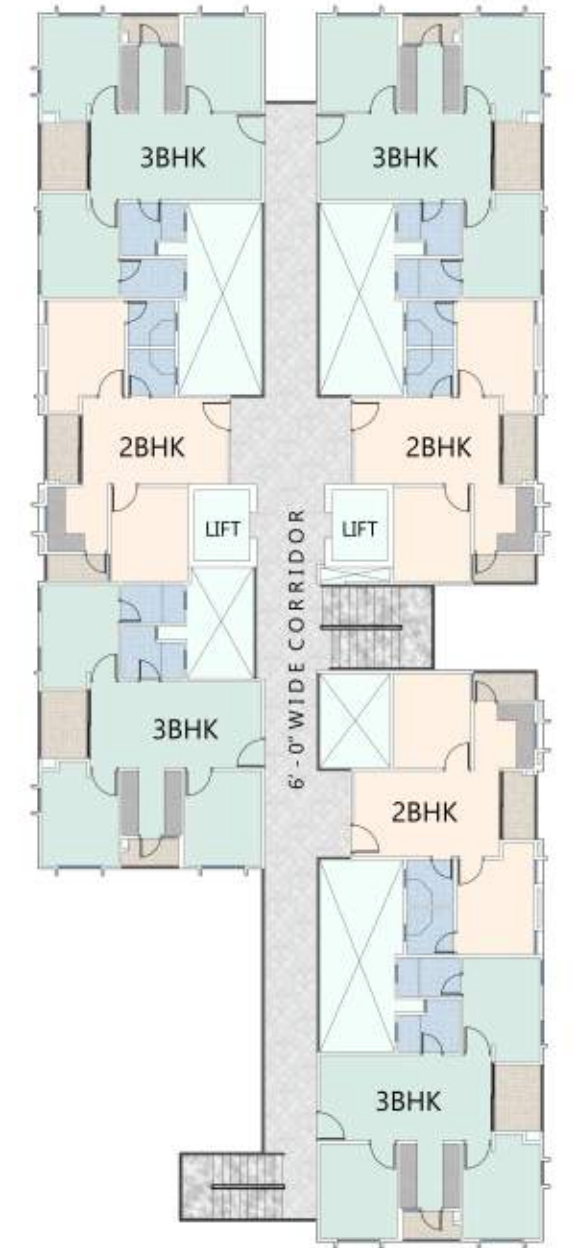
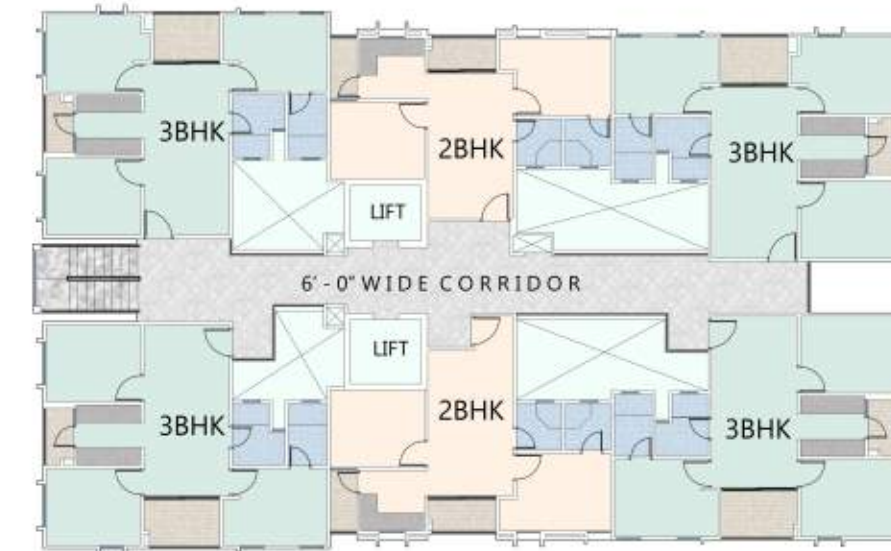
CHORDIA'S  
*Aashiyana*  
 YOUR WINGS TO LUXURY

Images are for illustration purposes only.

## TYPICAL FLOOR PLAN COMBINED PLAN OF BLOCK A, B & C



Images are for illustration purposes only.



• All areas are in square feet.

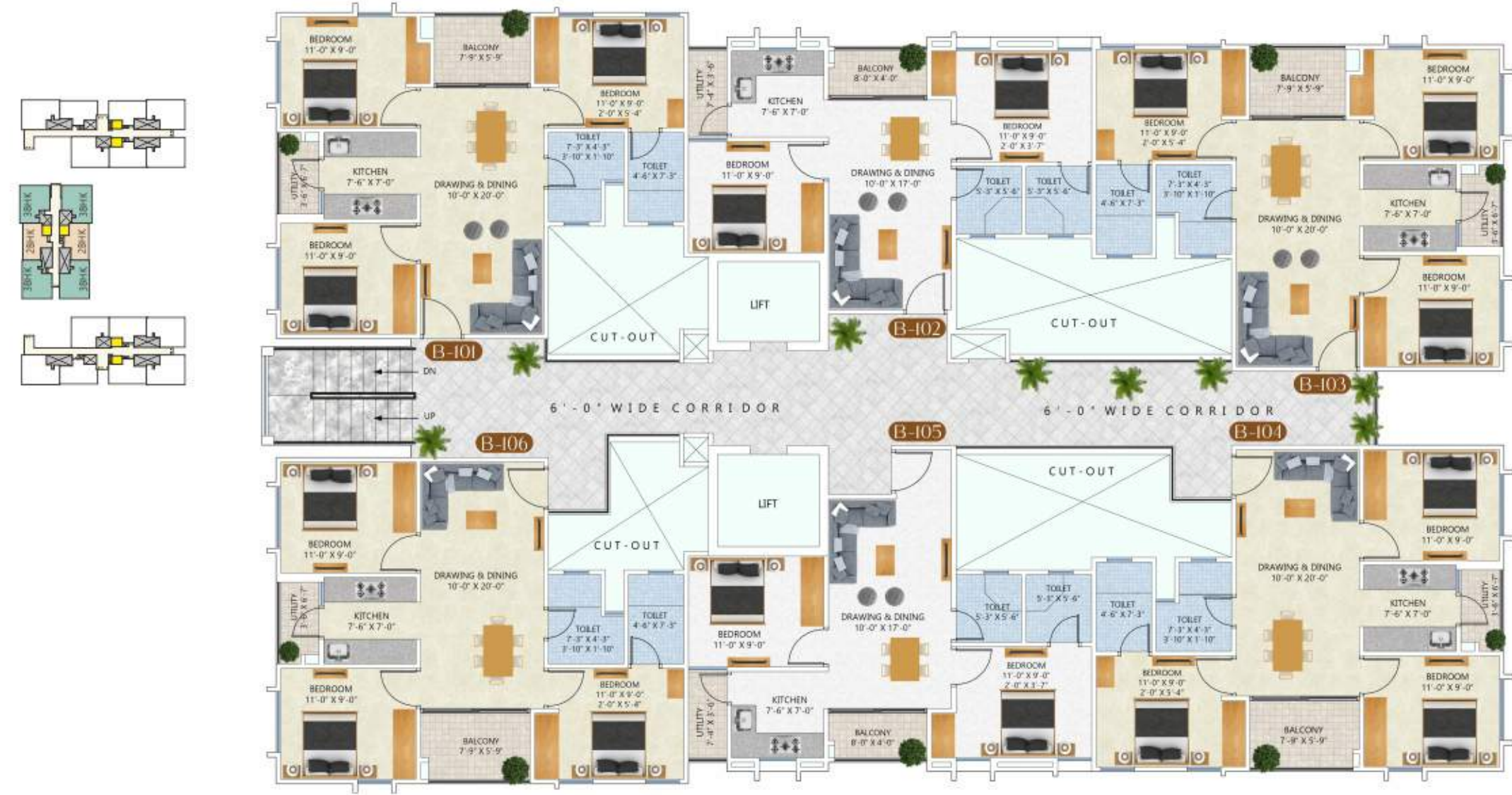
# BLOCK A TYPICAL FLOOR PLAN



• All areas are in square feet.

Images are for illustration purposes only.

# BLOCK B TYPICAL FLOOR PLAN



• All areas are in square feet.

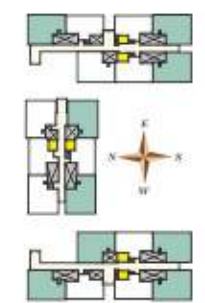
Images are for illustration purposes only.

# BLOCK C TYPICAL FLOOR PLAN



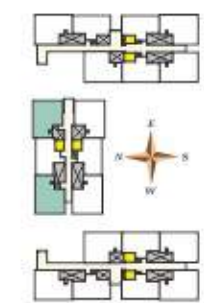
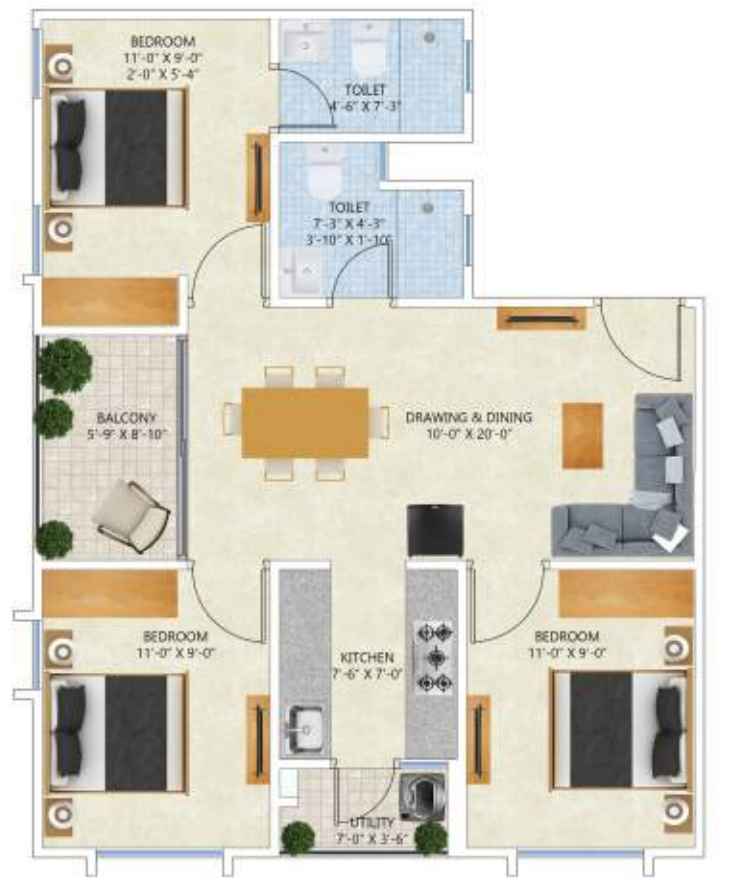
• All areas are in square feet.

Images are for illustration purposes only.



**3 BHK - TYPE A**  
SUPER BUILT UP - 1047.10

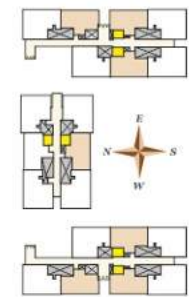
Images are for illustration purposes only.



**3 BHK - TYPE B**  
SUPER BUILT UP - 1047.10

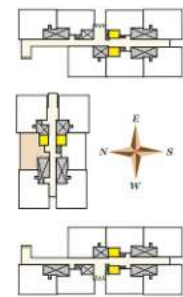
• All areas are in square feet.





**2 BHK - TYPE A**

SUPER BUILT UP - 810.90

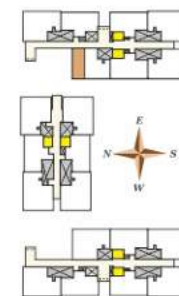


**2 BHK - TYPE B**

SUPER BUILT UP - 839.25

• All areas are in square feet.

Images are for illustration purposes only.

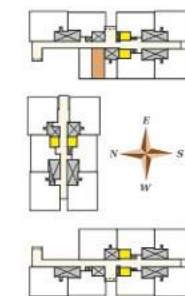
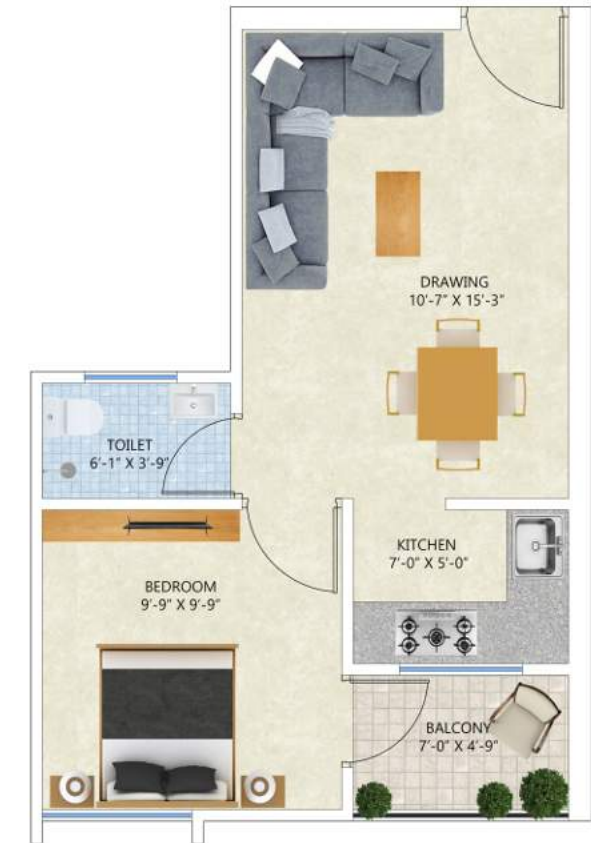


**1 BHK - TYPE A**

SUPER BUILT UP - 545.50

8th to 12th Floor

Images are for illustration purposes only.



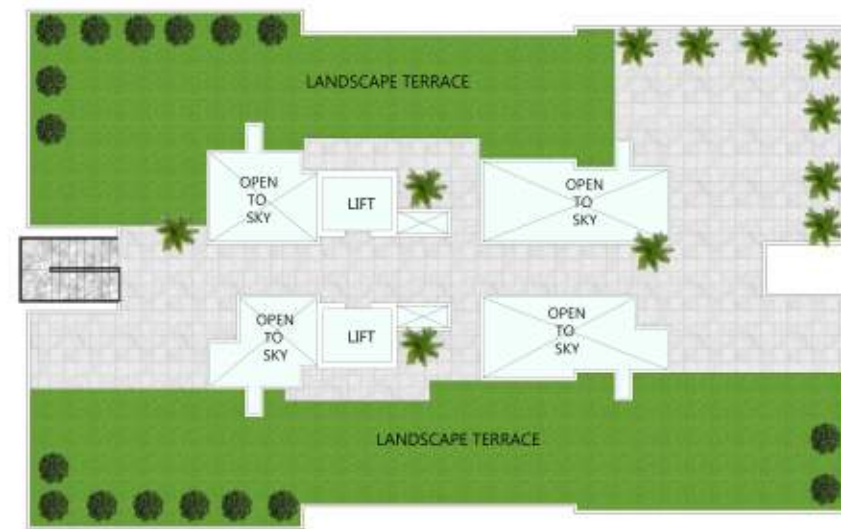
**1 BHK - TYPE B**

SUPER BUILT UP - 524.86

8th to 12th Floor

• All areas are in square feet.

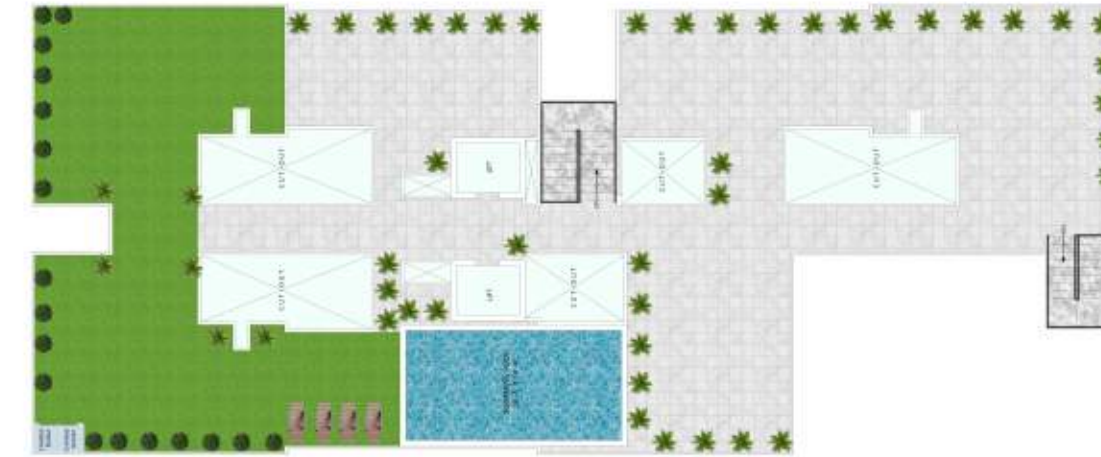
## TYPICAL FLOOR PLAN COMBINED PLAN OF ALL TERRACES



• All areas are in square feet.

Images are for illustration purposes only.

## TERRACE PLAN WITH POOL

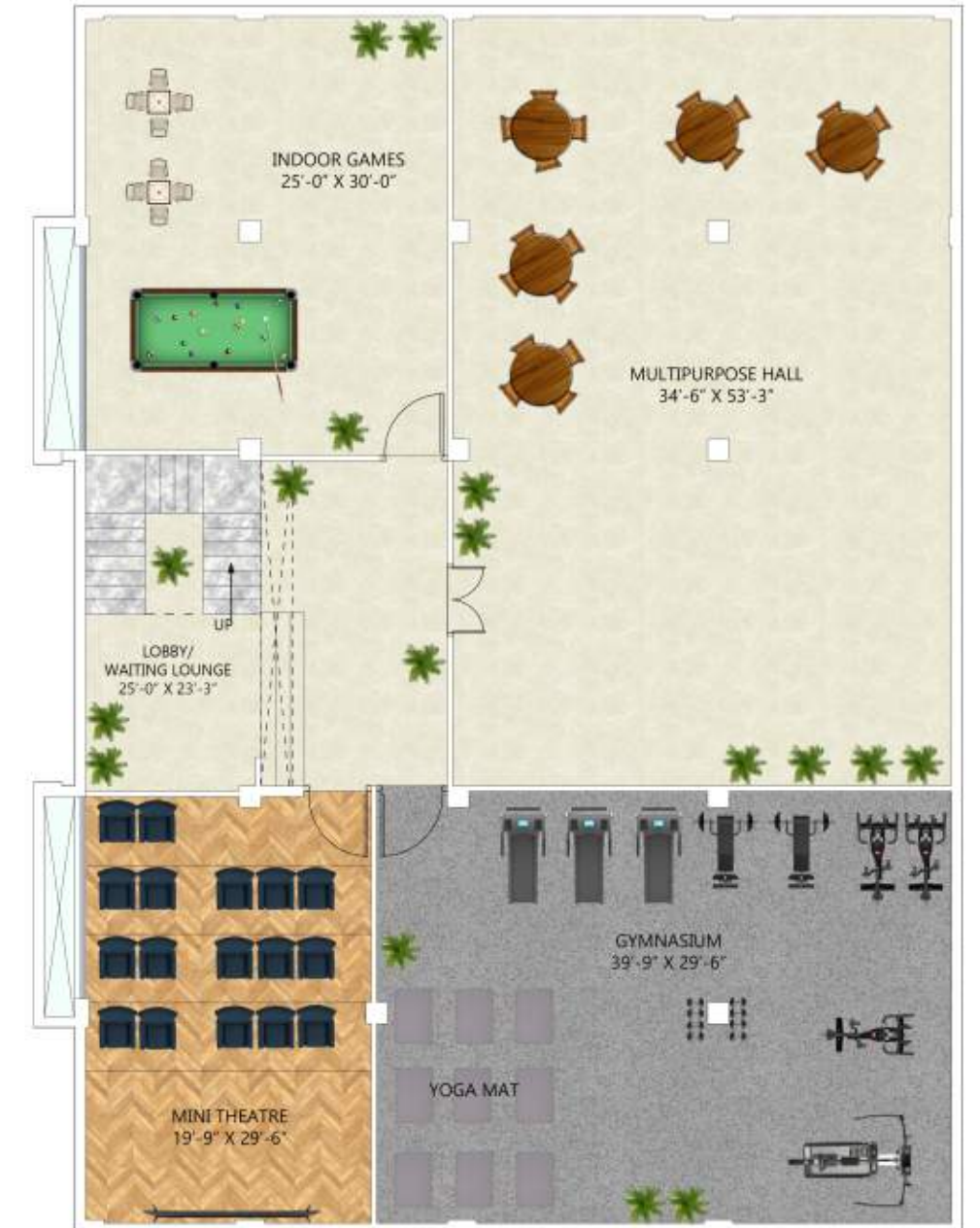


## COMMERCIALS FLOOR PLAN



Images are for illustration purposes only.

## CLUB HOUSE PLAN COMMON CLUB



• All areas are in square feet.

## DRAWING/ DINING



# SPECIFICATIONS

- Vitrified tile flooring
- Flush door with stone door frame
- Aluminum/UPVC windows
- Tractor emulsion paint
- Modular electrical switches
- Copper piping for AC

## WASHROOM



- Anti-skid tiles for flooring
- Flush Door
- C.P. Fitting of Parry ware / Johnson or equivalent brand
- Sanitaryware of Jaquar / Parry ware or equivalent brand
- Tractor emulsion paint

## KITCHEN



- Vitrified tile flooring
- Granite counters
- SS sink
- Modular electrical switches
- Aluminum / UPVC windows
- Fully modular kitchen Geysers/ Chimney/ RO

## BEDROOMS



- Vitrified tile flooring
- Flush door with stone door frame
- Aluminum/UPVC windows
- Tractor emulsion paint
- Modular electrical switches
- Copper piping for AC

## OTHERS



- Power backup for common areas
- Lighting fixtures in common areas
- M.S./S.S. railing
- Security/CCTV system
- External paint

Images are for illustration purposes only.



Images are for illustration purposes only.

# OUR PROJECTS



PRIME VILLE, Ajmer Road



PRIME VILLE CLASSIC, Ajmer Road



THE MARBELLA, Ajmer Road



ATULYA, Ajmer Road



G4, Ajmer Road



UTSAV, Mansarovar Extension



THE CROWN, Tonk Road



SHAGUN, V.T. Road, Mansarovar



WONDER HOMES, Ajmer Road



AASHIYANA, Kalwar Road



UPCOMING COMMERCIAL SPACE, Tonk Road



UPCOMING COMMERCIAL SPACE, Valsahall Nagar

Images are for illustration purposes only.



CHORDIA'S  
EXPECT MORE

We, at Chordia's, believe in creating path breaking housing infrastructure.

Combining the best designs, architecture, modern techniques and amenities, we create finest residential complexes.

Commitment, quality and innovation are the core values that inspire us to deliver better living spaces and memorable moments that our clients can forever cherish.

Images are for illustration purposes only.





**CHORDIA'S**  
EXPECT MORE

**- Corporate Office -**  
Chordia Enclave

29, Janpath, Shyam Nagar, Jaipur - 302019  
[www.chordiagroup.in](http://www.chordiagroup.in)

For more details, Call -

CHIRAG KHATRI  
**90014 12645**

BHISHM KHATRI  
**70145 03967**

All pictures and/or rendered images including the colour of the building depicted in this brochure are of an indicative nature only and have been used for illustration purposes. Photographs showing the surrounding views and location may have been digitally enhanced or altered and do not represent the actual views. All finishes/details/specifications are subject to change at the discretion of the developers and/or the architects. All areas depicted herein are approximate in nature. This brochure is purely conceptual and does not constitute an offer for sale or any form of agreement/contract. All purchases shall be solely governed by the terms of the agreement for sale.

