



ABOUT US

From last 10 years Chordia's group of builders is providing itself by making true sense of its punchline "We make your dream". Chordia's group of builders is the one who has done a fabulous work by changing the lifestyle of the Jaipurites and fulfilled the dream of thousands of people. The Journey that was started from Prime Ville is now reaching to new heights. The Marbella is perfectly dominated to provide a dreamful life. Utmost luxury, superb construction quality and state-of-the-art technique makes the Chordia's group of builders a real leader of the industry.

The milestone achieved by Chordia's group of builders is a result of hard work, positive attitude, dedication and prudent thinking of Chairman Mr. Vinay Chordia. Following the mantra "Dream with work can develop the World" Chordia's group of builders is progressing towards changing the parameters of real estate industry. The vision of Chordia's group of builders is "to build buildings not only with cement and steel but with a humane touch, to provide better spaces and better living to all its customers spanning residential, commercial, integrated townships, malls, multiplexes and hospitality sectors." Commitment, integrity, quality and innovation are the main core values of Chordia's group of builders that inspires the group to perform some steps ahead than the competitor.

सपनों का आशियाना



1/2/3 BHK APARTMENTS

@ 200 ft. Road, Chordia City,
Kamla Nehru Nagar, Ajmer Road, Jaipur

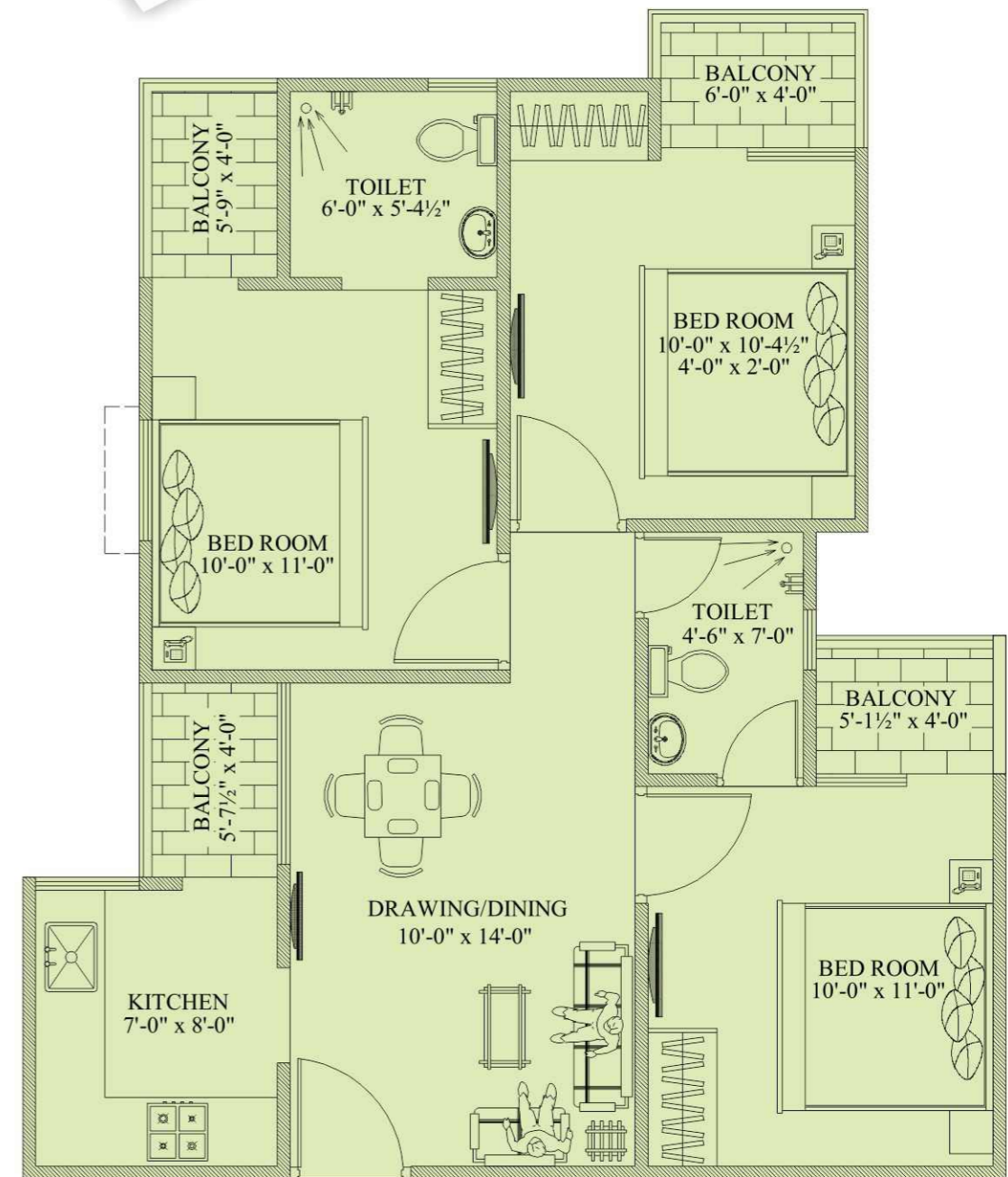
Dream Homes at unexpected price

- ★ YOUR DREAM HOMES IN THE HEART OF MODERN JAIPUR
- ★ A PERFECT LOCATION TO LIVE LIFE IN DREAMS
- ★ A PLACE WHICH IS CONNECTED WITH THE NATURE

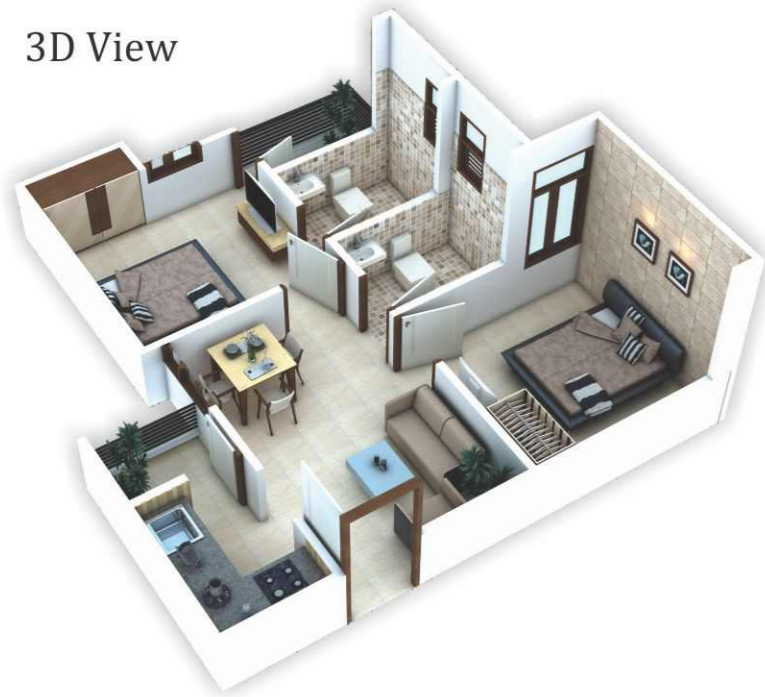
3D View



3 BHK Layout Plan
SUB 843



3D View

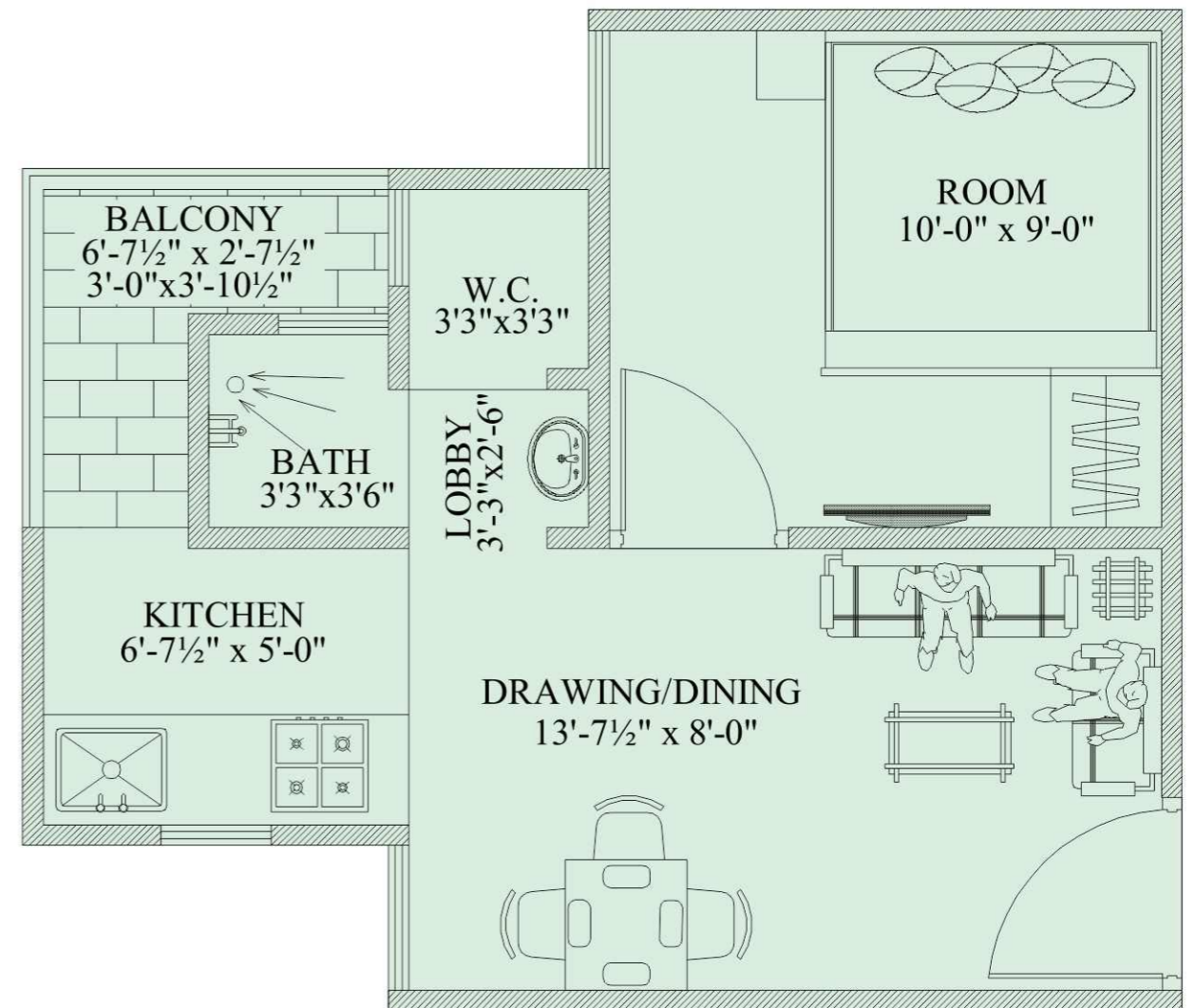
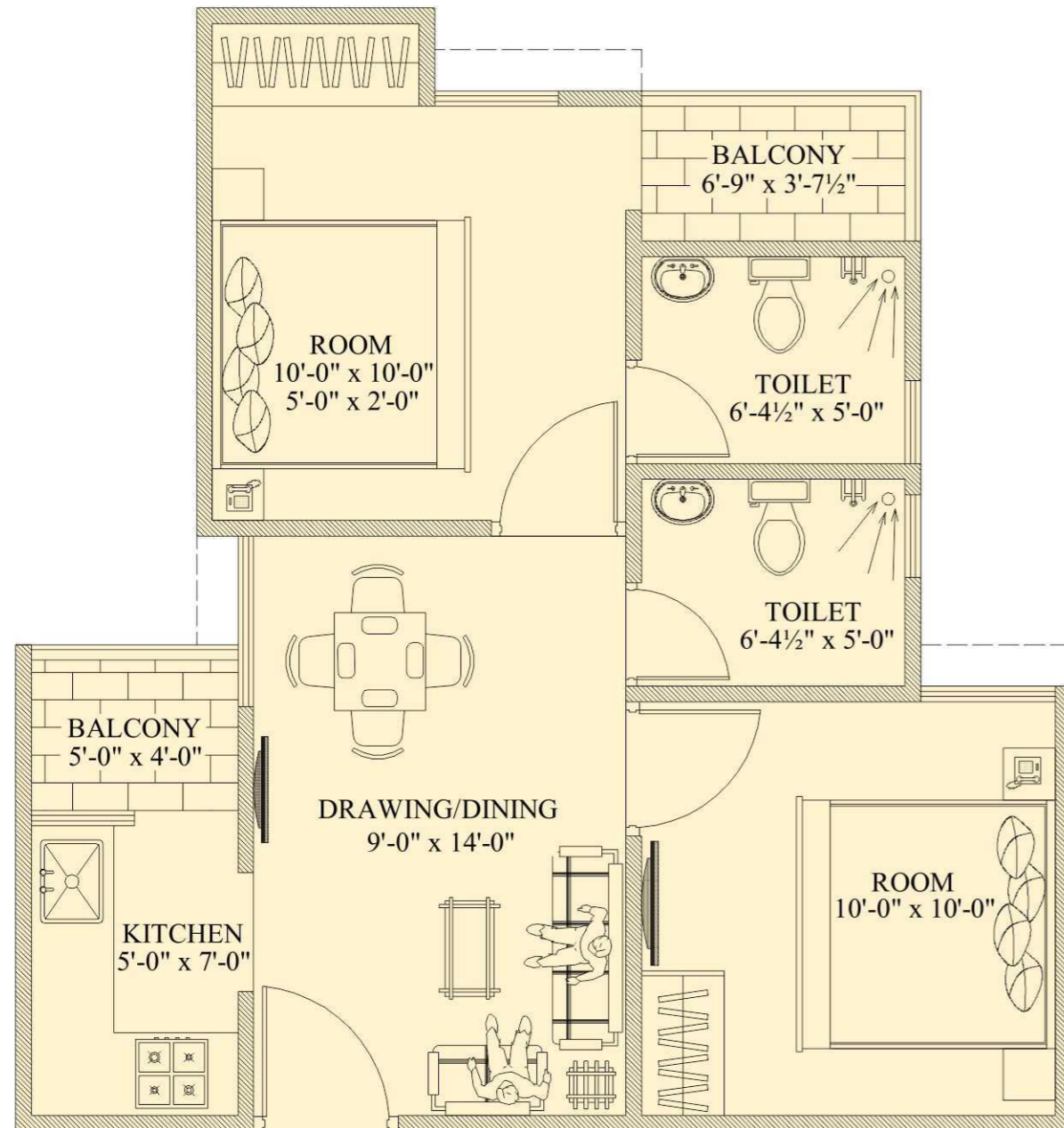


2 BHK Layout Plan
SUB 612

3D View



1 BHK Layout Plan
SUB 405



सपनों का आशियाना



1/2/3 BHK APARTMENTS

Ground Floor Plan

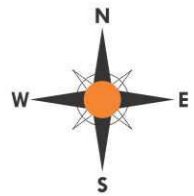
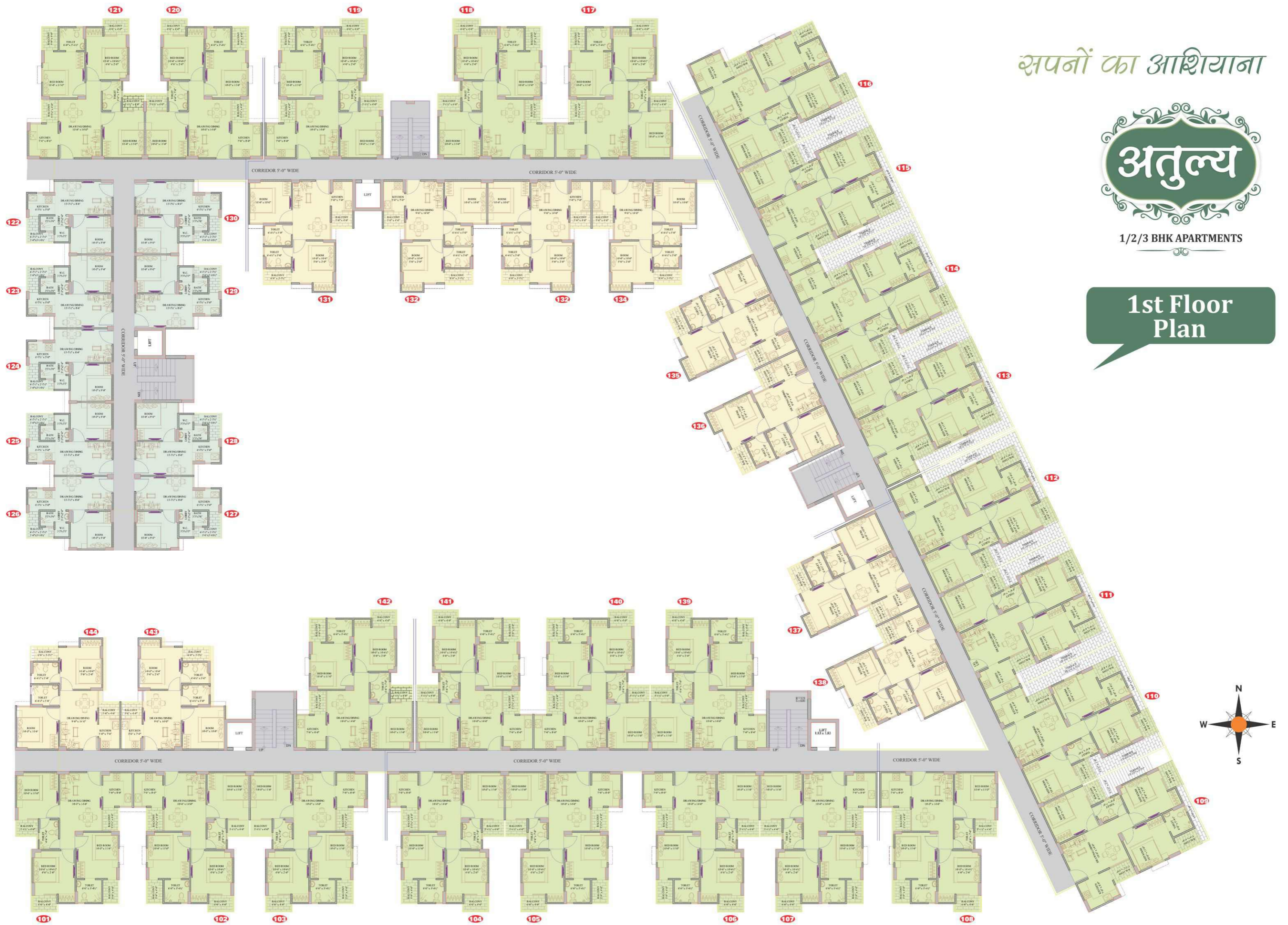


सपनों का आशियाना



1/2/3 BHK APARTMENTS

1st Floor Plan



सपनों का आशियाना



1/2/3 BHK APARTMENTS

2nd to 7th Floor Plan

