



Registered Office:

3F-07, Mahima Trinity Mall, Swej Farm, Sodala Jaipur 302019, M: +91 9983 333 777

info@siddhigameshomes.com | www.siddhigameshomes.com

rera website: www.rera.rajasthan.gov.in | rera no.: RAJ/P/2021/1771

Disclaimer: aut odit aut fugit, sed quia consequuntur magni dolores eos, qui ratione voluptatem sequi nesciunt, neque porro

quisquam est, qui dolorem ipsum sed quia consequuntur magni dolores eos, qui ratione voluptatem sequi nesciunt, neque porro

quisquam est, qui dolorem ipsum



# THE ARISTO

by Siddhi Homes & Chordia's

2,3&4 BHK Luxury Residences | Shipra Path, Jaipur



## It's all about exclusivity amongst the ordinary

Exclusivity separates our existence from everything ordinary and makes life vibrant and happening. Aristo is designed to celebrate the elements of exclusivity in every aspect of lifestyle. Life here finds new hues of joy to celebrate the true meaning of a modern and evolved lifestyle. There is so much to explore and live that moments at Aristo paint a vivid painting of a picture-perfect life. It's about celebrating and sharing the joy of togetherness in everything we wish or do.





## Be among the class, elevate your status

We are living in the times where life is more than just survival. That's why Aristo offers a lifestyle experience beyond the obvious. It's about designing a life where moments are adorned with the beauty of values without putting any extra effort. Aristo celebrates your individual self and illustrates a unique version of life. Be at the centre of everything and feel like a celebrity with a sense of pride.



## It feels like above all, obviously.

Think of a space where you expand the horizon of your thinking and aspire for something incredible. Aristo is the place that takes you to a world of new realities and raises the bar of excellence. Experience a life of defining luxury and revel in the beauty of a wonderful celebration. A marvelous world of bliss is waiting for you. Be here to rise to the level where desires take the shape of fantastic realities.



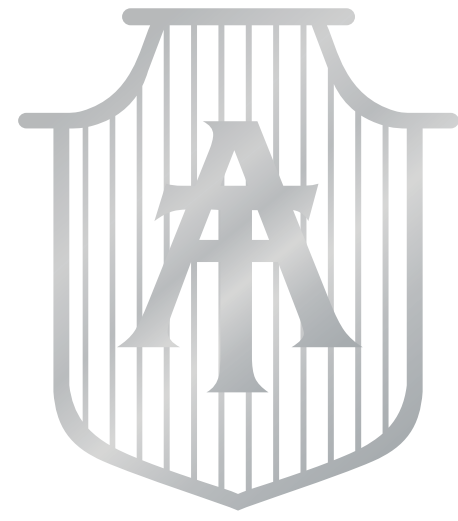
# THE ARISTO

by Siddhi Homes

A new expression of exclusivity

2,3&4 BHK Luxury Residences | Shipra Path, Jaipur





## The address That defines you.

Aristo is located at a place that needs no introduction. Once you are here, life takes you everywhere. Close to the most sought-after Dravyavati River Front Development, Aristo creates a unique world of its own. It connected you to every place of importance without compromising on your exclusivity. Aristo's location is perfect to give you an excellent connectivity to places like educational institutes, hotels, shopping malls, hospitals, entertainment hubs and airports. Time to live at the centre of an upper class social circle.

## Your exclusive circle



### Educational Institutes

Vardhman International School  
Kapil Gyanpeeth  
Modern School  
St. Anslem's  
ICG



### Hotels

Marriott  
Radisson Blue  
Royal Orchid



### Shopping Malls

World Trade Park  
Gaurav Towers  
Jaipur Central  
Mansarovar Plaza



### Hospitals

Fortis  
EHCC  
Cocoon  
HCG



### Entertainment

EP  
JKK



### Airport

Jaipur International Airport



Map not to scale

  
**THE ARISTO**  
by Siddhi Homes



Where you arrival  
says who you are.

Aristo is a concept of evolved living that establishes the basics of a contemporary lifestyle and introduces its dwellers to a space of modernity. Once you enter Aristo, an aura of luxury ushers you to a world that has its own parameters. Give life a chance and see what life can be in the middle of amenities that are at your disposal right from the beginning.





## The entrance as exclusive as you.

Aristo's entrance is an experience itself. It makes you feel special and announces your arrival in an elegant manner. Properly designed driveways and the charm of feature walls add to the overall experience of entering the world of beauty and luxury. Feel special and create a lasting impression of your persona to the rest of the world. Welcome to Aristo and belong to a world of many surprises.





## Your social club with an elegant charm

Luxury with a well-crafted social life is what makes the idea of living truly contemporary. Club Aristo brings many desires to life and creates a perfect signature of style. The club houses all facilities and compliments the idea of a happening social life. There is a touch of refined luxury in everything you see or touch. Outside the typical routine, Club Aristo reflects the charisma that attracts you and celebrates your moments of joy in all glory.

{ Club  
Aristo } it's inviting...



{ Club  
Aristo } it's inviting...

For a fit  
& active lifestyle

Club Aristo boasts a well-equipped gym to offer its residents an active and healthy lifestyle. It's the place that brings people together to form a community that believes in living to the fullest with all enthusiasm and energy. The gym at the Club Aristo creates enough space to pursue fitness for all age and need groups. Relax, get into the gears and get ready to burn those extra calories in your own way.



Yoga Deck



Gazebo



Jogging Track



Multi-purpose Hall



# Terrace Floor Plan

## Legend

- 1 Swimming Pool
- 2 Softscape
- 3 Hardscape
- 4 Stepped Seating
- 5 Yoga Zone
- 6 Deck
- 7 Jogging Track
- 8 Gazebo







# Site Plan

## Legend

- 1 Entry/ Exit
- 2 Driveway
- 3 Ramp Down
- 4 Ramp Up
- 5 Lobby
- 6 Gymnasium
- 7 Multi- Purpose Hall
- 8 Open Parking
- 9 Basement Parking





# Floor Plan

**Area Table (Typical Floor 1st-7th)**

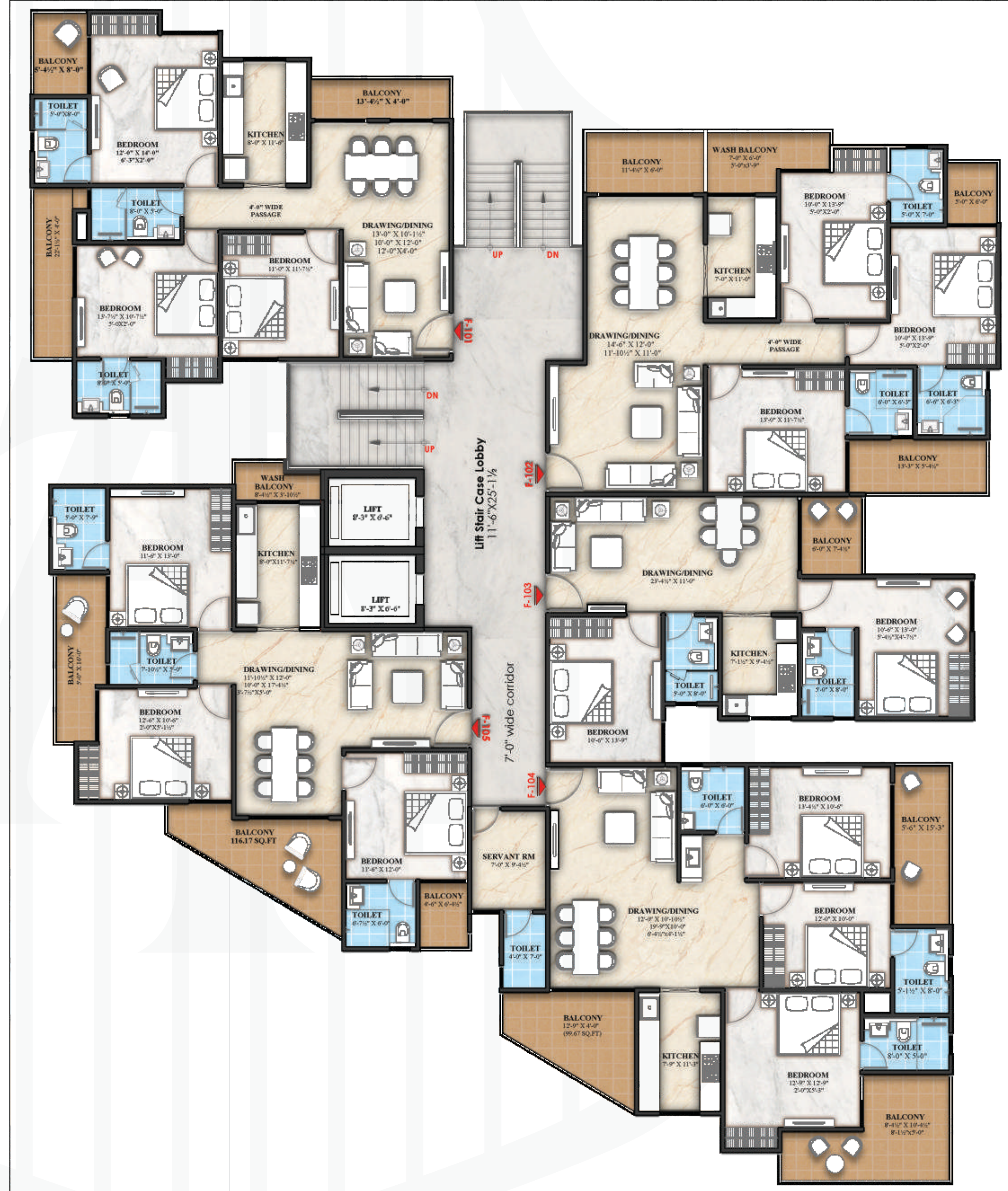
Flat No.	BUA Sq.Ft.	Salable Sq.Ft.
F- 101	1245.73	1656.82
F- 102	1356.10	1803.61
F- 103	823.65	1095.45
F- 104	1505.30	2002.05
F- 105	1312.56	1745.70

**Area Table (8th Floor)**

Flat No.	BUA Sq.Ft.	Salable Sq.Ft.
F- 101	1245.73	1656.82
F- 102	1356.10	1803.61
F- 103	1713.76	2281.48
F- 104	1312.56	1745.70

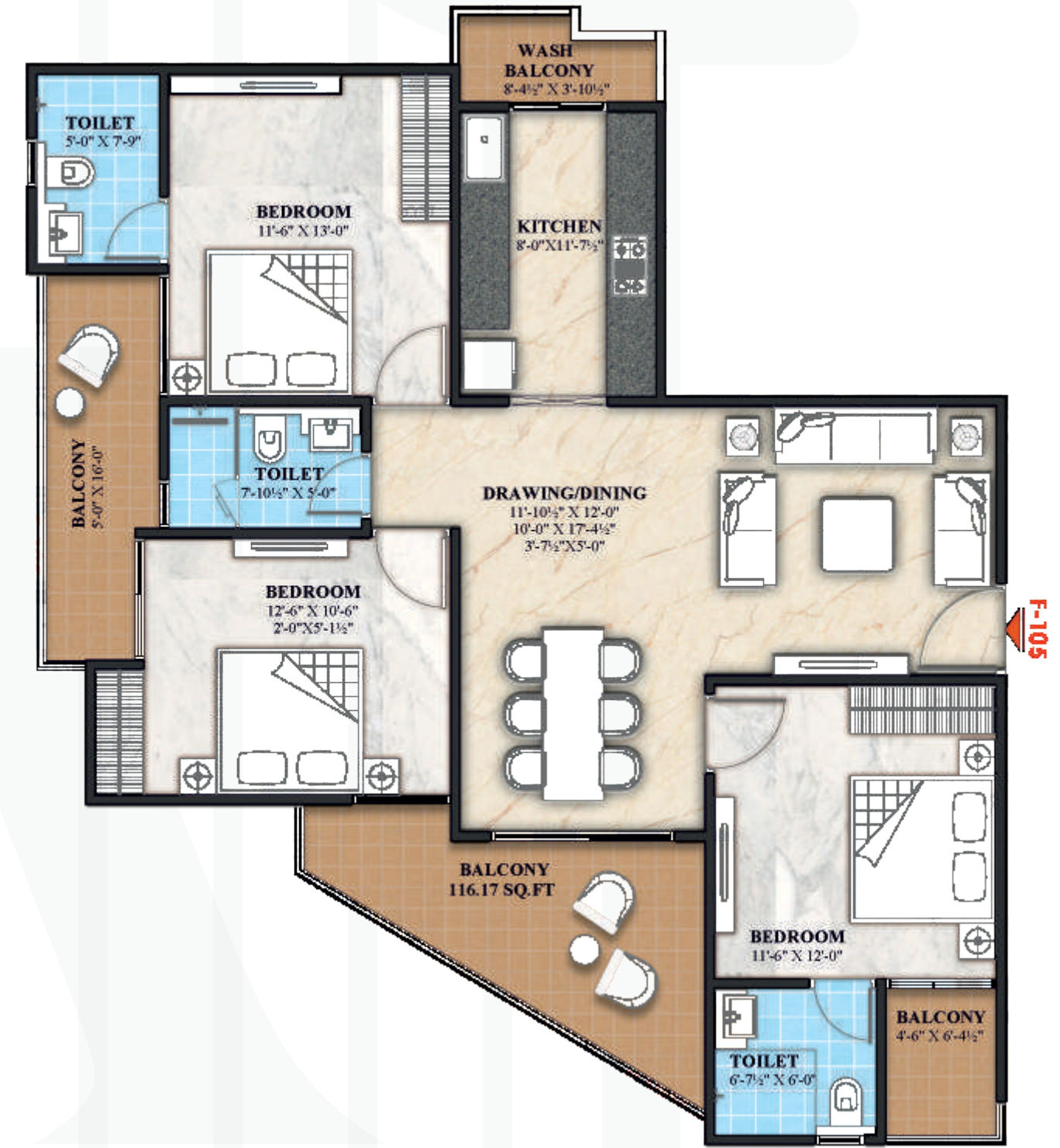
**Area Table (Typical Floor 9th-12th)**

Flat No.	BUA Sq.Ft.	Salable Sq.Ft.
F- 101	1245.73	1656.82
F- 102	1356.10	1803.61
F- 103	823.65	1095.45
F- 104	1505.30	2002.05
F- 105	1312.56	1745.70

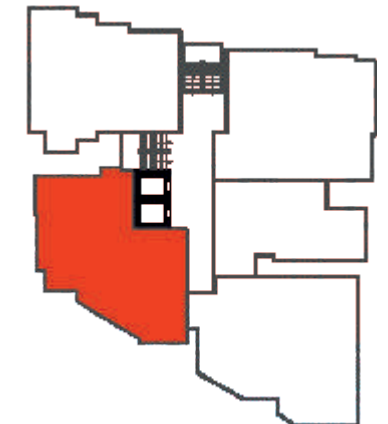




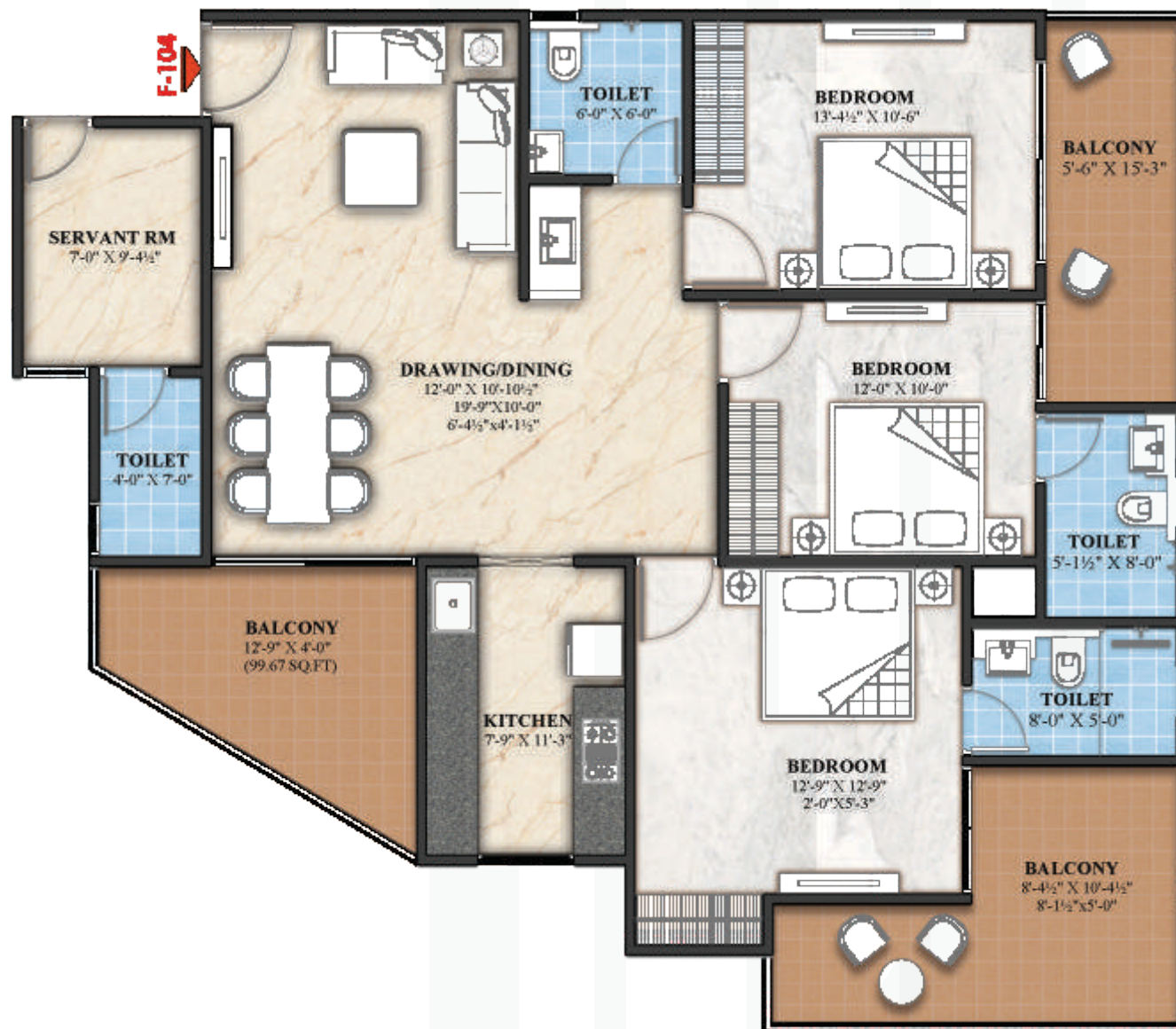
Area Table		
Flat Type	BUA Sq.Ft.	Salable Sq.Ft.
4 BHK	1713.46	2281.48



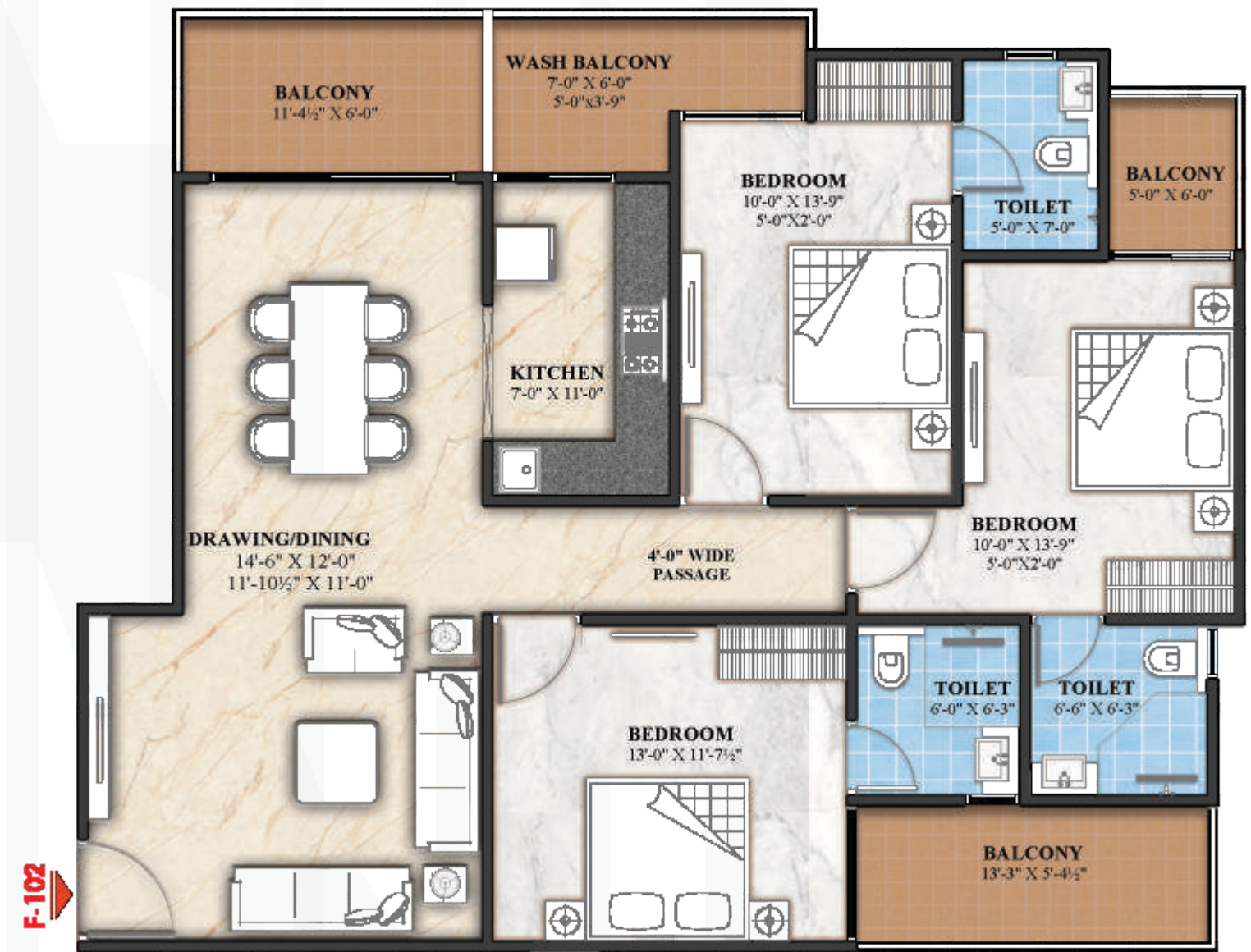
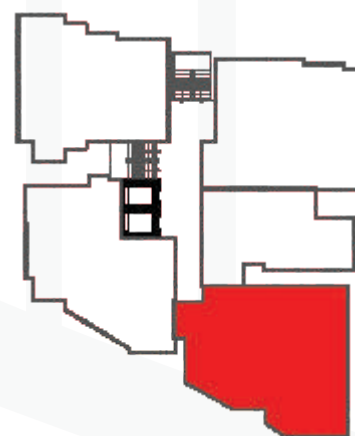
Area Table		
Flat Type	BUA Sq.Ft.	Salable Sq.Ft.
3 BHK-1	1312.56	1745.70



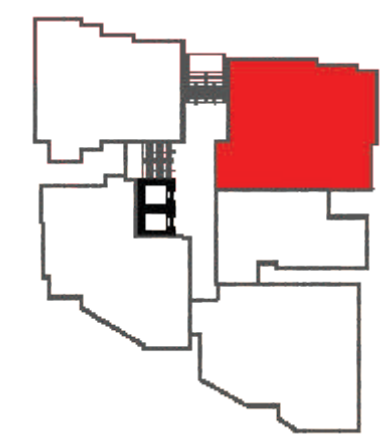




Area Table		
Flat Type	BUA Sq.Ft.	Salable Sq.Ft.
3 BHK-2	1505.30	2002.05

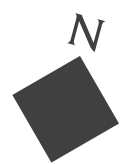


Area Table		
Flat Type	BUA Sq.Ft.	Salable Sq.Ft.
3 BHK-3	1356.10	1803.61





Area Table		
Flat Type	BUA Sq.Ft.	Salable Sq.Ft.
3 BHK-4	1245.73	1656.82



Area Table		
Flat Type	BUA Sq.Ft.	Salable Sq.Ft.
2 BHK	823.65	1095.45





## Finer Details

### LIVING/DINING/DRAWING

Floor	Premium Tiles
Walls	Acrylic emulsion paint on POP
Ceiling	Plastic Paint and cornices
Windows	Premium Aluminium Sliding Windows

### BEDROOMS

Floor	Wooden flooring/Vitrified tiles
Walls	Acrylic emulsion paint on POP (Asian, Dulux & Nippon)
Ceiling	Acrylic emulsion paint and cornices (Asian, Dulux & Nippon)

### KITCHEN

Floor	Premium Tiles
Walls	Tiles up to 2'-0" above counter and premium emulsion paint in the balance area
Ceiling	Premium emulsion paint on POP
Counter	GRANITE
Fitting/ Fixtures	CP fittings of kohler/ jaquar/roka/toto or equivalent, double bowl SS sink "International Standard"
Kitchen Appliances	Fully Modular Kitchen Single bowl SS sink inside the kitchen & double bowl SS sink outside in wash area R.O. under counter with water spout Gas pipe line with centralized gas bank system Smoke detector Washing machine point in utility area

### TOILET

Floor	Anti-skid premium tiles
Ceiling	Combination of tiles, acrylic emulsion paint "grid false ceiling" Wall hung wc with concealed cistern in all bathrooms with exhaust fans, mirror & bathroom Accessories "Gyser provision, small fan"
Plumbing	Piping for water supply inside the toilet and kitchen & UPVC pipes for stacks "ISI mark/Aaashirwad /Supreme/Astral or equivalent" Wet area with glass partition Single lever sanitary fittings Jaquar/Durvit or equivalent

### BALCONY

Floor	Anti-skid Tiles
Ceiling	Wooden/ false ceiling
RAILING	Glass railing with SS top/ as per design

### LIFT LOBBY

Lift lobby floor	Granite/ marble "combination of italian marble/granites"
Lift lobby walls	Suitable combination of granite and acrylic emulsion, textured paint

### STAIRCASES

Floor	Granite/ vitrified tiles or equivalent
Walls	Flat Oil Paint "EXTERIOR PAINT"

### DOOR

Main designer polished door 50 mm thk. With teak wood door frame, both side veneer  
Internal 40 mm thick flush doors.  
Locks international standard yale etc.

### WINDOWS

High quality euro profile aluminium window with 3 track system

### CIVIL WORKS

Brick	AAC Blocks Bricks/Bricks
Structure	A-Class R.C.C. frame structure and Brick Wall in cement Mortar plastered both side. Earthquake resistant structure
Cement	Any large cement plant like ACC/ShreejChetak/Birla etc.
Steel	FE 500 quality Shree Krishna/TATA/Mangla/Rathi/ Kamdhenu SAIL and Equivalent

### ELECTRICAL WORKS

Fixtures	Modular switches of Northwest/ crabtree/schneider/legrand/noris or equivalent make and copper wiring
Fittings	Concealed copper wiring with good quality pvc conduits. Tv/telephone point at suitable place (all bed rooms, drawing rooms (lounge etc.) ISI mark "all bed side usb charging point" Connections in 15 amp. Sockets duly earthed shall be provided for geysers & air conditions.

### WATER SUPPLY & TREATMENT

The complex has been planned with tube wells and adequate water storage tanks with water softening plant

### SECURITY & SAFETY

24 hrs live CCTV recording, EPABX facility with intercom facility in each apartment  
Efficient & effective fire fighting system as per statutory norms and sprinklers in basement emergency exit through an extra staircase provides contingency option  
3 Tier Security- Video door phones at apartment Entrance  
Fire fighting system as per NBC norms.

### AIR CONDITIONING

Ledges for outdoor units of the split/"VRV" AC. Provision of concealed drainage, copper tubing arrangements in drawing, dining, living and bedrooms

### INTERIOR

Gypsum/POP leveled internal walls finished with acrylic emulsion paint



The Makers

**Siddhi**  
Homes

Siddhi Homes is a name that believes in bringing values and modernity to everyday lifestyle. Driven by the passion to surpass the customers' expectations, Siddhi Homes has proved its mettle by delivering world-class residences to contemporary life seekers.

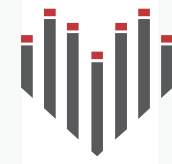
Be it quality, planning or execution, the company strives hard to provide the best in each detail of construction. Spearheaded by Mr. Rajesh Saharan and Mr Rajesh Dukiya, Siddhi Homes is a 15 year old company with presence in Mansarovar, Sodala and Vaishali Nagar in Jaipur. The company has successfully delivered 25 lakh square feet across 19 shining projects in the short span of its existence.

More than 1900 smiling families are enjoying a great lifestyle in Siddhi Homes projects. Under the able leadership of Mr. Rajesh Saharan and Mr Rajesh Dukiya, Siddhi Homes is spreading its wings in the sky of possibilities and envisions a promising growth in the times to come.



Architects

Established in the year 1997, "Ideas" is a multi-disciplinary architectural firm based in Jaipur that offers consultancy for Architecture, Urban Design and Interiors. Headed by our principle architect Mr Gyanendra Singh Shekhawat Ideas has a varied and extensive portfolio across Hospitality, Housing, Commercial, Residential and Institutional projects. Successfully completing projects in various spheres, the company has grown rapidly in all major cities in association with prestigious clients and world-renowned associates like AEDAS, Belt Collins, Design in nature by John Pettigrew, P49, Studio HBA, Burega Farnell, DJ Coalition and more. Over the years their practise has pioneered pure functional and contextually relevant architecture.



CHORDIA'S  
EXPECT MORE

We at Chordia's, believe in creating path breaking housing infrastructure. Combining the best designs, architecture, modern techniques and amenities, we create finest residential complexes. Commitment, quality and innovation are the core values that inspire us to deliver better living spaces and memorable moments that our clients can forever cherish.